



AVL LOOMS

AVL Looms, Incorporated

2360 Park Avenue, Chico, California 95928-8305

Phone: 530-893-4915 Fax: 530-893-1372 www.avlusa.com

Workshop Dobby Loom Raddle

Installation and Use Instructions

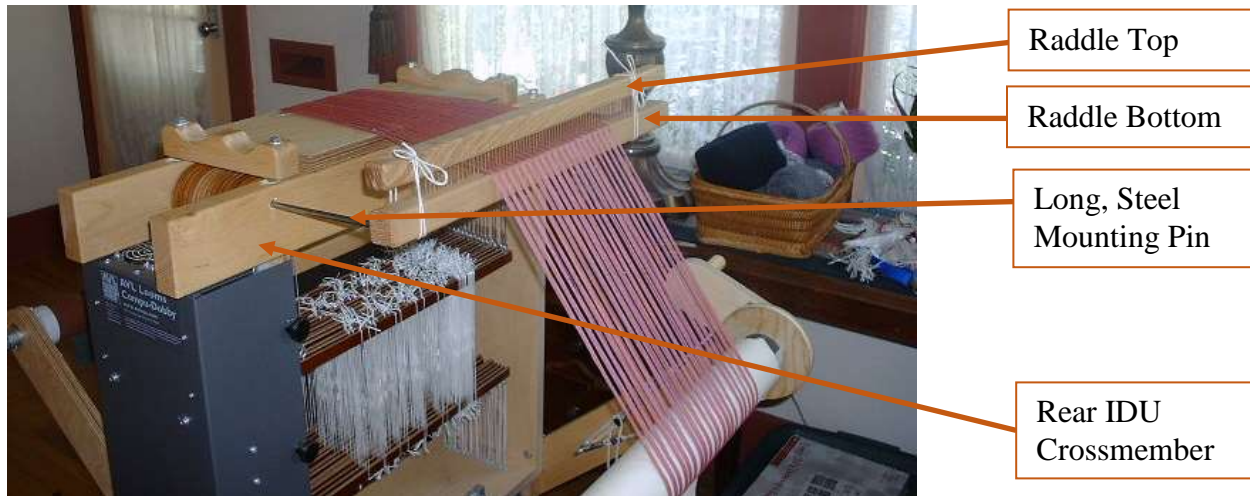


Image 1: AVL Raddle Mounted on WDL

The AVL Raddle for the Workshop Dobby Loom (WDL) follows our traditional raddle design, including removable top for easy threading and high quality hardwood and metal pins for durability. It should provide you with years of reliable, maintenance-free use.

Assembly

Your new raddle will come in four pieces:

- Raddle Bottom with pressed-in, copper-colored pins
- Raddle Top with groove corresponding to the pins on the raddle bottom
- 2 – Raddle Support Pins

The Raddle Support Pins will snugly fit into the corresponding holes on the side of the raddle bottom. Press them into the corresponding holes in the side of the Raddle Bottom until they the bottom of the holes. You may need to lightly tap the pins with a fiber hammer to fully seat them. If required, place the raddle bottom on a flat, solid surface. Hold the pin in the hole and lightly tap until fully seated.

The raddle top will fit snugly onto the copper-colored pins of the raddle bottom.



AVL LOOMS

AVL Looms, Incorporated

2360 Park Avenue, Chico, California 95928-8305

Phone: 530-893-4915 Fax: 530-893-1372 www.avlusa.com

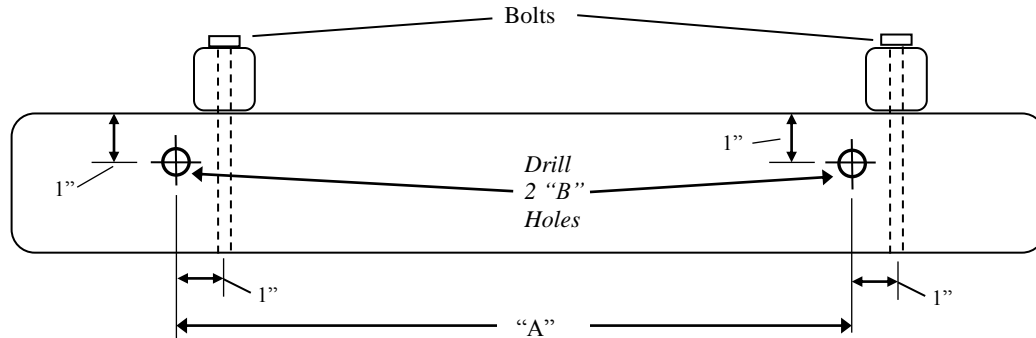
Drilling Raddle Holes

Older WDLs will not have come from the factory with pre-drilled for raddle mounting holes. For these looms, the user must drill two holes in the rear IDU crossmember to the following specifications:

Raddle Support Hole Specifications Table

WDL Width	Drill Bit "B"	Hole Spacing "A"	Hole Depth
16"	9/32"	18 7/8"	3/4"
24"	9/32"	26 7/8"	3/4"

Figure 1: Rear IDU Crossmember with Raddle Support Holes





AVL LOOMS

AVL Looms, Incorporated

2360 Park Avenue, Chico, California 95928-8305

Phone: 530-893-4915 Fax: 530-893-1372 www.avlusa.com

Raddle Use



Image 2: AVL Raddle (Raddle Top Removed)

To use the Raddle, mount it onto the loom. The Raddle Support Pins (now seated into the Raddle Bottom) fit into holes in the rear IDU crossmember to mount the raddle onto the WDL. If there are no raddle holes in your WDL you will need to drill them (see *Drilling Raddles Holes*).

Lift off the Raddle Top and lay your warp into the gaps between the copper-colored pins. Replace the Raddle Top, then tie your warp onto your apron rod and wind your warp on to the warp beam.