



AVL Looms, Inc.

LOCKING BRAKE INSTALLATION INSTRUCTIONS FOR A-SERIES AND FULL FRAME LOOMS UPPER AND LOWER POSITIONS

TOOLS REQUIRED:

- | | |
|---|---|
| 2 | 7/16" Socket Wrench/Ratchet (or equivalent) |
| 2 | 1/2" Socket Wrench/Ratchet (or equivalent) |
| 1 | Drill and 17/64" Drill Bit |

PREPARATION

1. Remove the following components from the loom:
 - a) Weight
 - b) Tension Arm
 - c) Braking Cable Assembly with Tie-Up
2. Select the preferred side of loom where the brake Pedal is to be installed.
Note: Placement side may require that warp beam be turned 180 degrees to place Brake Drum on same side as the selected Pedal location.

DRILL & MOUNT THE EYE BOLT

3. On the selected side of the loom, mark the Hole location by measuring 3 inches (from the inside of the leg edge) on the bottom rear of the Lower Side Frame Horizontal beam – See Figure A.

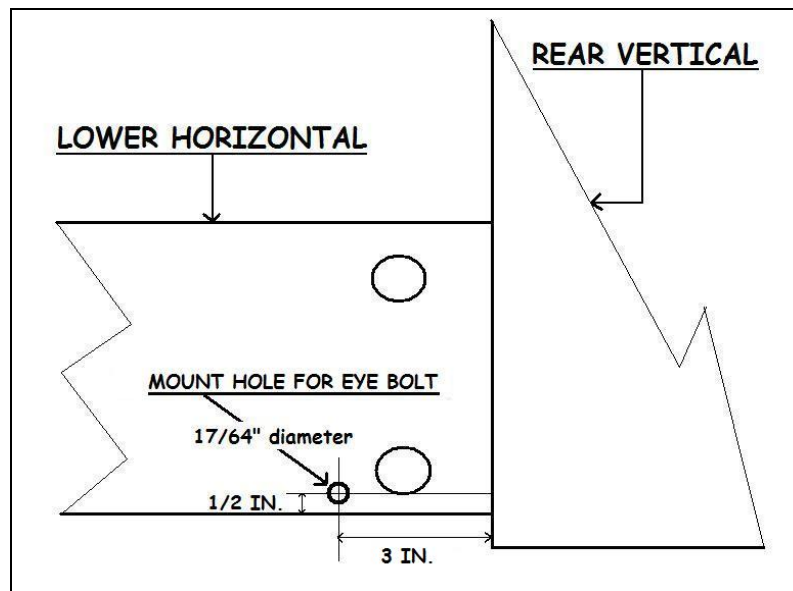


Fig. A – Location of Mounting Hole for Eye Bolt

4. At the previously marked 3-inch line, measure 1/2 inch from the bottom edge of the beam and cross mark that point – See Figure A.
5. Using the 17/64" bit, drill a hole through the Horizontal, on the marked cross-line.



LOCKING BRAKE INSTALLATION INSTRUCTIONS
FOR A-SERIES AND FULL FRAME LOOMS
UPPER AND LOWER POSITIONS

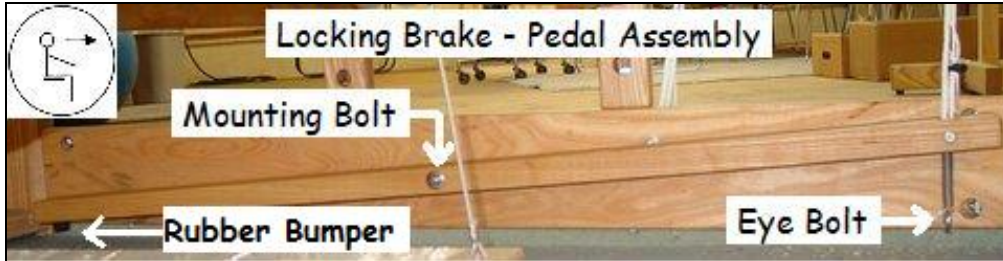


Figure B – Pedal Installation

6. Orient the wood Pedal Assembly (Eye Bolt, Spring, Nylon Cord and Brake Cable are attached) inside the loom, along the Horizontal, such that the Rubber Bumper is facing downwards. (See Figure B) *If the Pedal Assembly is not complete*, remove the Nylock and slide the Bolt out until the end is visible in the $\frac{3}{4}$ " vertical hole, located opposite the Rubber Bumper. Thread three loops of the Tension Tie-Up, from above the Pedal, onto the Bolt, followed by one end of the Spring, from below the Pedal. Reinsert the Bolt and secure with the Nylock. – See Figure C.

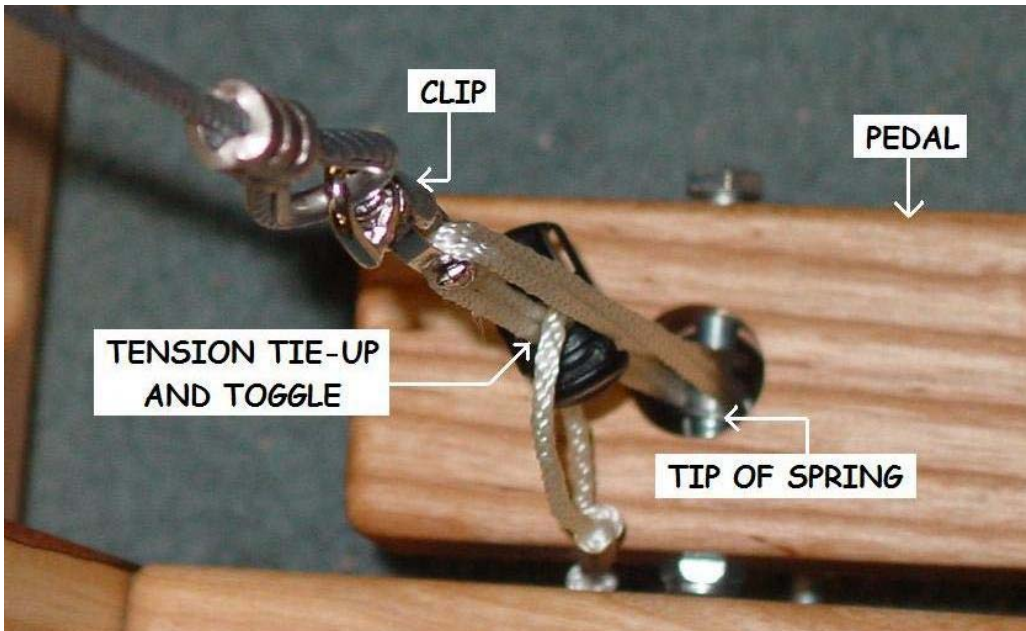


Figure C – Pedal & Tension Tie-up Assembly

7. Remove the first Nylock and the first Washer from the Eye Bolt (with the Spring, etc. attached), and finger tighten the remaining Hexagonal Nut fully to the end of the (7. Continued) thread of the Eye Bolt. Insert the Eye Bolt (with Hex Nut) from the inside of the loom, through the hole drilled in Step 5 above. Replace the washer and Nylock. Check that the Eye of the Bolt is oriented vertically and tighten securely in place. See Figure B.



LOCKING BRAKE INSTALLATION INSTRUCTIONS
FOR A-SERIES AND FULL FRAME LOOMS
UPPER AND LOWER POSITIONS

PEDAL INSTALLATION FOR BOTTOM SWING BEATERS

8. With the Pedal in place (after installation of the Eye Bolt in Steps 6 & 7, remove the rear Hex Bolt from the Beater Support/Beater Support Spacer, along with the two Washers, Hex Nut, and ¾" Pedal Spacer.
9. Insert the new 5/16"-18x6 5/8" Bolt (with one washer) through the Beater Support and Beater Support Spacer (in place of the Hex Bolt removed in Step 7 above).
10. Slide the ¾" Pedal Spacer onto the Bolt, followed by one Washer, and then mount the Pedal to the bolt via the left side countersunk hole at the center of the wood Pedal.
11. Place the second Washer and the Nylock on the tip and tighten against the Pedal using the ½" wrench. Once tightened, test the Pedal for smooth movement. If it seems to bind, back the Nylock off slightly, until freedom of movement is achieved.

PEDAL INSTALLATION FOR OVERHEAD BEATERS

12. After installation of the Eye Bolt (Steps 6 & 7), the Pedal should now be oriented so the Rubber Bumper is facing down and at the front of the loom. See Figure B.
13. From the outside, insert the 5/16"-18x4 ½" Bolt (with one washer) through the factory-drilled hole located mid-point on the Lower Horizontal.
14. Slide the ¾" Pedal Spacer onto the Bolt, followed by one Washer, and then mount the Pedal to the bolt via the left side countersunk hole at the center of the wood Pedal.
15. Place the second Washer and the Nylock on the tip and tighten against the Pedal using the ½" wrench. Once tightened, test the Pedal for smooth movement. If it seems to bind, back the Nylock off slightly, until freedom of movement is achieved.

INSTALLATION OF THE J-BOLT FOR LOWER AND UPPER POSITIONS

16. Remove the Nylock and first washer from the J-Bolt and finger tighten the remaining Hex Nut fully to the end of the thread of the Eye Bolt. Insert the Bolt from the inside of the loom, through the existing hole (previously used by either Tension Arm) located in the Rear Vertical Beam of the Side Frame, above the Brake Drum. - See Figure D.
17. Secure the J-Bolt (with nut) to the Side Frame by replacing the Washer and Nylock on the outside of the loom and tighten in place.

COMPLETING THE TIE-UP FOR THE LOWER POSITION

18. Route the Cable for your Lower Position Locking Brake from the Pedal, upwards inside of the loom, over and around the rear of the Brake Drum. Loop around the bottom of the Brake Drum and then up, to secure it by slipping the cable loop onto the J-Hook above the Drum. See Figure D.

COMPLETING THE TIE-UP FOR THE UPPER POSITION

19. Route the Cable for your Upper Position Locking Brake from the Pedal, upwards inside of the loom, over and around the rear of the Brake Drum. Loop around the bottom of the Brake Drum and then up, to secure it by slipping the cable loop onto the J-Hook above the Drum. See Figure E.



**LOCKING BRAKE INSTALLATION INSTRUCTIONS
FOR A-SERIES AND FULL FRAME LOOMS
UPPER AND LOWER POSITIONS**

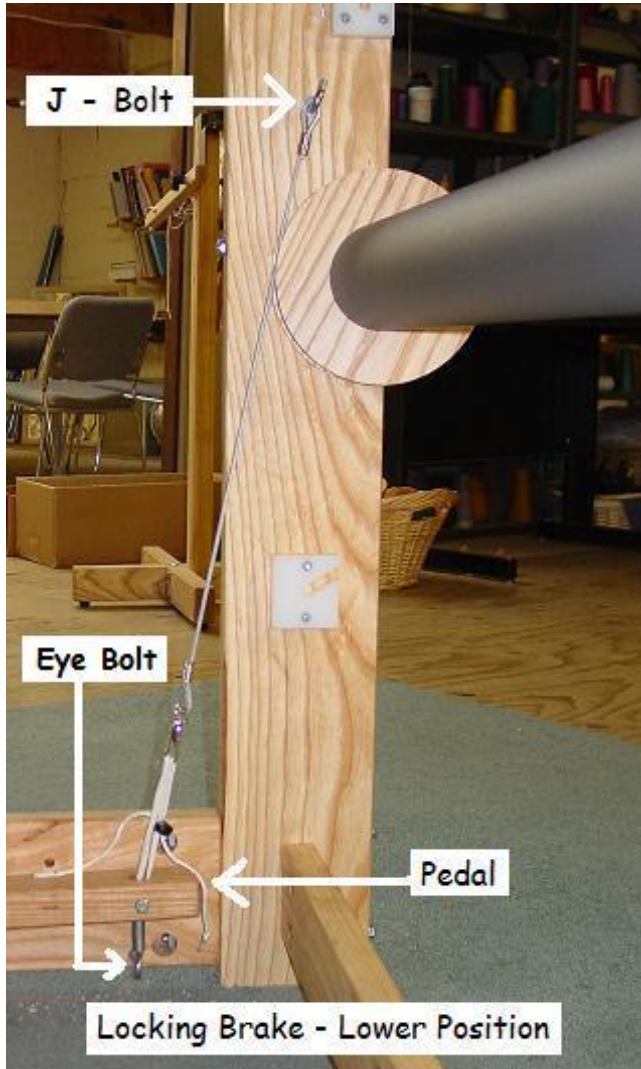


Figure D – Installation for Lower Position



Figure E – Installation for Upper Position

Installation of the Locking Brake Kit is now complete. Adjust brake tension by squeezing the Mini-Toggle Lock. Tighten tension by pulling on the two ends of the Cord and adjusting the loops by squeezing the Toggle. Release tension by moving squeezing and moving the Toggle up and down on the cord, allowing the length of the Cord to feed out. – Releasing the Mini-Toggle will retain the new tension adjustment.