

## FDL REVOLUTION COUNTER INSTRUCTIONS

**NOTE:** You will need a 4" "C" clamp to install your Revolution Counter.

The AVL Revolution Counter is designed for use with AVL Sectional Warp Beams. It is used to accurately keep track of the number of turns a beam makes during the warping or weaving process.

### Mounting the Counter

The Counter will mount on the front edge of either folding leg. If you are "winding on" to a beam, mount the counter on the right leg. If you wish to count yardage while weaving, secure it to the left leg.

1. Locate the small stud that came packaged with the counter. The threaded end of this stud needs to be screwed into the outer edge of the Sectional Beam Outer Disc on the same side of the loom as where you plan to mount the counter. Drill a small pilot hole (9/64" diameter, if possible) anywhere around the circumference of the Outer Disc, centered on the thickness of the disc. Firmly screw the stud into place with a wrench or pliers.
2. You'll note that there are two holes in the long, black metal counter bracket. If you are using the Counter with a One Yard Sectional Beam, the *LOWER* hole is correct. For a 1/2 Yard Sectional Beam, you will use the *UPPER* hole.

Now, remove the Beam Retaining Pin from the upper end of the folding leg on your loom. Locate the appropriate hole in the Counter Bracket and align it with the Retaining Pin hole. Reinstall the pin.

Use your clamp to secure the lower end of the bracket to the leg.

You will, of course, need to reverse the plywood mounting plate when relocating the unit from one leg to another.

3. Test your handiwork by spinning the beam a few times and making sure that the counter clicks to the next number during each revolution of the beam. Note that the counter will only work in one direction. This should be the direction that the beam is turning while winding on the warp. Depending on how close the counter is to the beam, you may find it necessary to remove the rubber arm from the counter during weaving. This will only be necessary if the stud strikes the rubber arm in such a way that it actually impedes the rotation of the warp beam.

# FDL REVOLUTION COUNTER INSTRUCTIONS

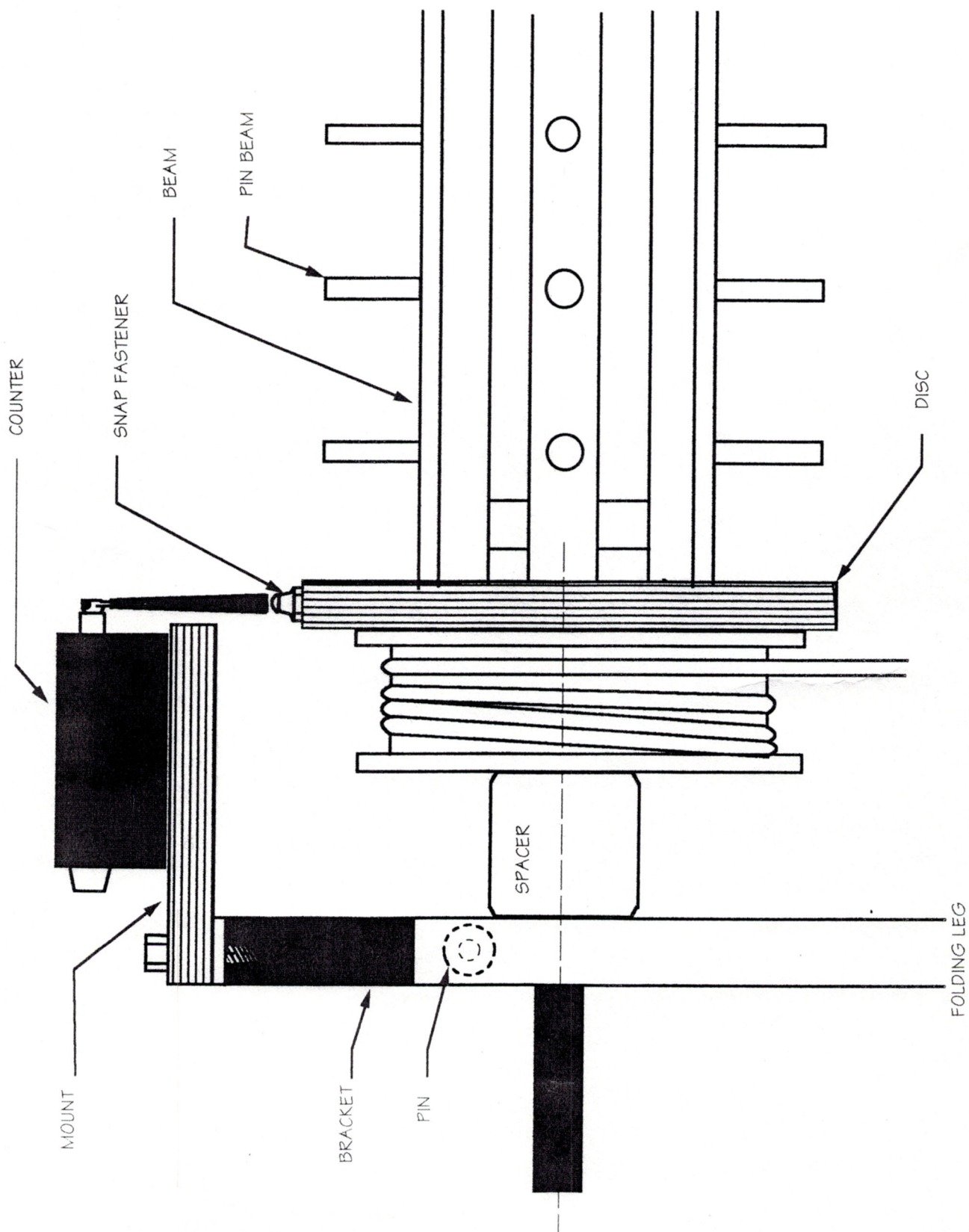
Page 2

## Using the Counter

The Revolution Counter is easy to use. Before actually winding on the warp, make sure to reset the counter by twisting the knob on the side of the counter until it shows all zeros. Each time your beam makes a revolution, it will add a number to the display on the counter. For One Yard Sectional Beams, this will be approximately 36 inches. For 1/2 Yard Sectional Beams, this will be approximately 18 inches. Please bear in mind that as the number of layers add up on the beam, these measurements (18" and 36") will increase somewhat. You should also note that the numerical display of the counter does not represent an accurate length of measure. Its purpose is to give the weaver a tally of revolutions made while winding a sectional warp beam, so that each section will have the same number of wraps and the same length of yarn.

Before you wind on the next section, be sure to zero the Counter. As mentioned earlier, you may wish to remove the rubber arm of the counter before weaving.





DRAWING NAME: <b>FDL REVOLUTION COUNTER ILLUSTRATION</b>		DRAWN BY: <b>NRAING A KO</b>		<b>AVL LOOMS</b>	
DRAWING NUMBER:		DATE DRAWN: 5-7-99		REVISION DATE:	
COMMON LOOMS:		REVISION DESCRIPTION:			
MATERIAL:		NOTES:			