

AVL Looms Price List

Effective July 2024



AVL Looms, Inc

2360 Park Avenue

Chico, CA 95928

530-893-4915 (phone) 800-626-9615 (toll free)

530-893-1372 (fax)

sales@avlusa.com

www.avlusa.com

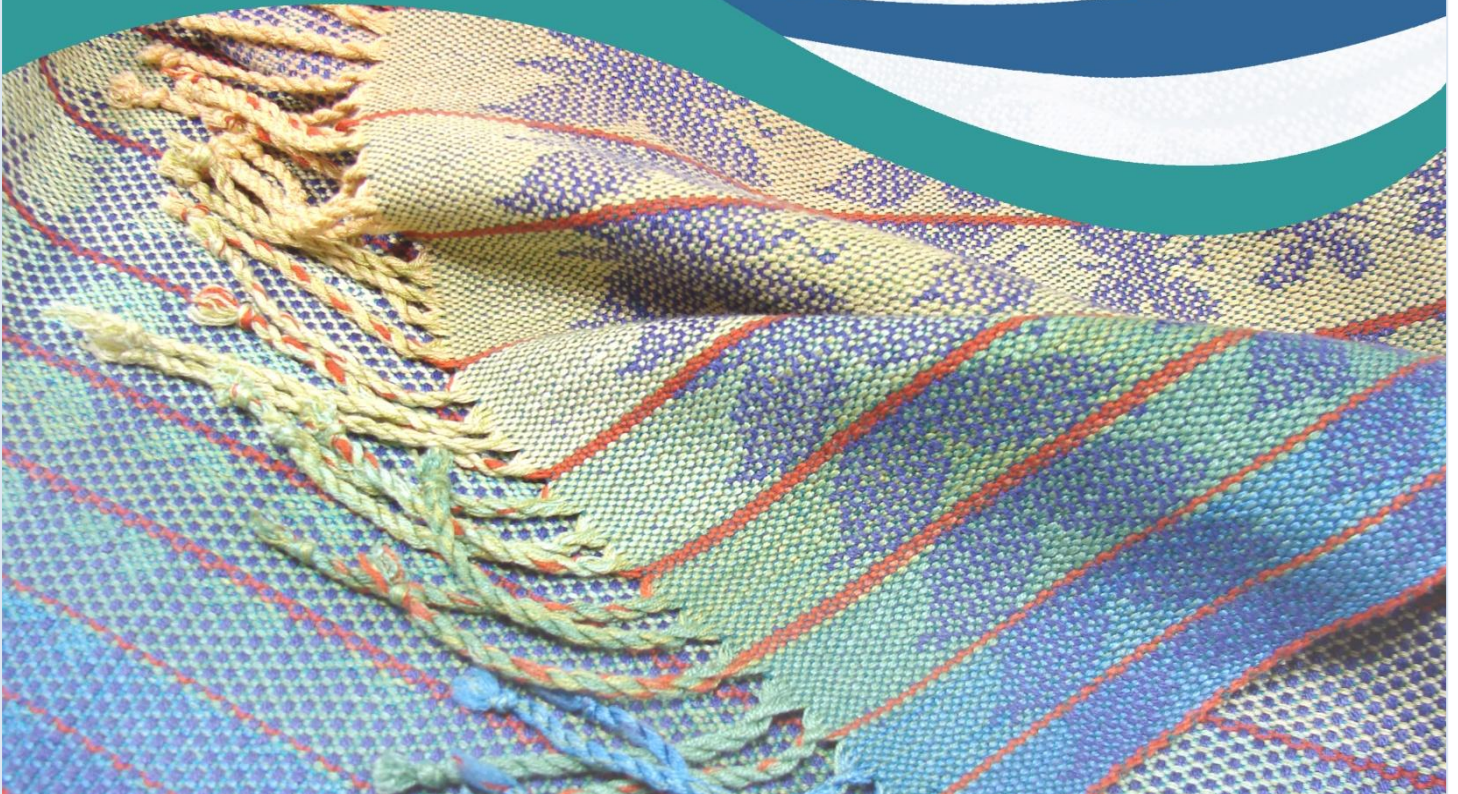


Table of Contents

Ordering Information.....	3
AVL'S Assurance of Satisfaction	3
Little Weaver	4
Home Loom.....	5
Workshop Dobby Loom	6
Studio Dobby Loom.....	7
K-Series Loom.....	8
V-Series Loom	9
A-Series Loom	10
Artisan Loom	11
Jacq3G Loom	12
Jacq3G Loom Conversion System	14
Professional Dobby Rug Loom	15
Appendix	16
Crating and Handling.....	16
Shipping Policy & Methods	16
Warranty Information	17
Pricing.....	19

Ordering Information

How to Order

Order on our website, by phone, fax, email or mail:

To order through our secure and easy e-commerce site, visit www.avllooms.com. Phone: 800-626-9615 or +1 530.893.4915; Mail: AVL Looms, 2360 Park Avenue, Chico CA 95928; Fax: 530-893-1372; Email: sales@avlusa.com

How to Pay

Payment Methods: AVL accepts cash (USD only), personal and company check (payable in USD only), wire transfer, money order, MasterCard, Visa, American Express, Discover and PayPal. Companies in business for more than two years may apply for credit with us on a net thirty day basis. Please ask for an AVL Credit Application. We also offer AVL Financing and Leasing. Please call for details.

Orders \$1,500 or more usually require a 50% deposit at the time of order and the balance due at time of shipment. If you plan to pay via wire transfer for an order under \$1,500, please include \$45 USD to cover bank charges. **ALL PRICES ARE IN U.S. DOLLARS**

AVL'S Assurance of Satisfaction

Your satisfaction is assured in five important ways:

Hand-built by skilled craftsmen and precision machinery

Each AVL Loom is built in our shop. There is no assembly line at AVL; rather a team of dedicated individuals who carefully assemble all of our products from start to finish. It is a new age AVL and computer numeric controlled machines now cut all the parts. This means each part should be perfect, every time.

Full AVL warranty on materials and workmanship

We use only the finest quality materials such as kiln-dried hardwood, precision-machined cast aluminum and steel and high tech plastics, so we confidently offer each (original) AVL loom owner this warranty:

During the first two years of ownership, we will replace or rebuild, at no charge, any part on your loom that fails to perform according to our specifications. Electrical and pneumatic components, including the Compu-Dobby system, carry a full one year warranty. For full warranty language, please see page 31.

Unlimited assistance

Expert help and advice is as close as your phone. If you have a problem with an AVL loom purchased from us, simply write, call, fax, email or visit us – we'll work with you until the problem is solved.

Lifetime reconditioning program

If you ever want your loom completely reconditioned – from top to bottom – we'll do it at a price that won't exceed 1/3 of the current list price.

After the sale, we stay in touch

Each loom owner becomes a valuable member of our growing AVL family of weavers. In fact, virtually every innovation that we've come up with has been the result of feedback from at least one of our loom owners. To better facilitate communication, we stay in touch through periodic emailing, blog postings, and the internet announcements (www.avllooms.com). Make sure to ask to be on our emailing list!

Little Weaver

COMING SOON!

LITTLE WEAVER VERSION 2.0

NEW FEATURES:

- Adjustable warp tension
- Smoother shed changing
- Lighter weight
- Compu-Dobby® 5

All Little Weavers include:

- AVL Compu-Dobby®
- 8, 16 or 24 harnesses
- 16 inch weaving width
- Automatic shed changing, no levers!
- Easily run from any tablet or computer, no software to install
- Ability to fold up without losing warp tension
- Includes: 10 Dent stainless steel reed, 35 polyester heddles per harness, apron rod and tie-on cords
- Illustrated, printed manual (also available online)
- Standard AVL warranty - see appendix



Little Weaver runs integrated AVLDrive software, which allows the weaver to simply open a WIF file and start weaving - it's that easy! Compatible with Wi-Fi, USB, Mac®, Windows®, iOS®, Android® and more.

Electrical Requirements:

- 3.6A @ 110VAC or 1.8A @ 220VAC (please specify at time of order)
- USB 1.1 or WiFi

Little Weaver Version 1.0 Specifications

	<u>8 Harness</u>	<u>16 Harness</u>	<u>24 Harness</u>
Height	17 ¼"	17 ¼"	17 ¼"
Overall Width	22 ¾"	22 ¾"	22 ¾"
Depth (Folded)	17 ¼"	17 ¼"	17 ¼"
Depth (Weaving)	26 ¾"	26 ¾"	26 ¾"
Weight	32 lbs	36 lbs	39 lbs

Little Weaver is AVL's computerized tabletop loom. Little Weaver makes weaving on a table loom a snap. Little Weaver's revolutionary design changes the shed and moves the harnesses as you move the beater; no levers to flip! Little Weaver is a great loom for small sampling or learning, for new weavers and weavers looking to dip their toes into complex weaving.

Home Loom



All AVL Home Looms include:

- AVL exclusive side tie-up pattern selection with thirty tie-up cords
- 8 harnesses and 10 treadles
- Polyester or metal heddles
- 100 heddles per harness
- Bottom swing beater
- Plain warp beam
- Locking brake warp tension system with foot pedal release
- Sturdy ratchet and pawl cloth storage control
- Stainless steel reed: 6, 8, 10, 12 or 15 dent (please specify at time of order)
- Two aprons with three steel rods
- Kiln-dried ash construction

- Illustrated, printed manual (also available online)
- Standard AVL warranty - see appendix

Home Loom Specifications

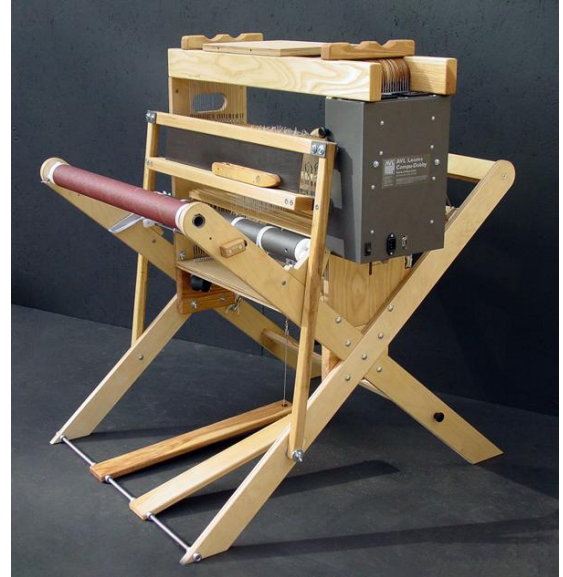
	24" (60 cm)	40" (100 cm)	48" (120 cm)
Height	48" (120 cm)	48" (120 cm)	48" (120 cm)
Overall Width	34" (86 cm)	50" (127 cm)	58" (147 cm)
Front to Back	41"/28" folded (104 cm/71 cm folded)	41"/28" folded (104 cm/71 cm folded)	41"/28" folded (104 cm/71 cm folded)
Weight	85 lbs (39 kgs)	125 lbs (57 kgs)	140 lbs (64 kgs)

There are lots of floor looms, but the Home Loom stands above them all with one truly special feature --- side tie-up! Jim Ahrens developed the first and still only system that allows the weaver to perform the harness to treadle tie-ups in a comfortable position at the side of the loom. No more crawling under your loom with each new warp. Home Loom's side tie-up makes you love weaving all over again!

Workshop Dobby Loom

All Workshop Dobby Looms Include:

- AVL Compu-Dobby® (please specify 110 or 220VAC at time of order)
- 8, 16 or 24 harnesses
- Interchangeable design unit on castors for easy transport
- X-Frame legs for rapid assembly/disassembly
- Standard beater
- Stainless steel reed: 6, 8, 10, 12 or 15 dent (please specify at time of order)
- Sectional warp beam with 2" sections - hoops are removable for use as plain beam
- AVL "Sticky" front beam
- Sturdy ratchet and pawl cloth storage control
- 25 polyester heddles per harness
- Illustrated, printed manual (also available online)
- Standard AVL warranty - see appendix



Workshop Dobby Loom Specifications

	16" (40.5 cm)	24" (61 cm)
Height	43" (109 cm)	43" (109 cm)
Overall Width	26" (66 cm)	35" (88.9 cm)
Front to Back	39" (99 cm)	39" (99 cm)
Weight	47 lbs (21 kgs)	77 lbs (35 kgs)

16 Inch Workshop Dobby Loom

The original "California Traveler" is designed for portability with quick setup/take-down features that allow you to take your fully warped loom on the road to workshops or wherever your heart desires!

24 Inch Workshop Dobby Loom

In addition to the standard features, the 24" WDL includes a separate cloth storage beam. The 24" WDL is an excellent value for sampling and small projects.

The AVL Compu-Dobby® system is a compact, custom-designed electronic interface between your computer and your AVL loom. The Compu-Dobby® is a fast, reliable means to accomplish complex weaves with ease. It does far more than merely free you from the tedium of inserting pegs into dobby bars or memorizing treadling patterns; it allows your creativity to soar! You input and edit a design on your computer and immediately execute it on the loom. It's still hand weaving, but with greater efficiency and control.

Studio Dobby Loom

All Studio Dobby Looms Include:

- Sliding beater
- AVL Compu-Dobby® (please specify 110 or 220 VAC at time of order)
- 16 or 24 harnesses
- Plain warp beam
- Locking brake warp tension system with foot pedal release
- Sturdy ratchet and pawl cloth storage control
- Stainless Steel Reed: 6, 8, 10, 12 or 15 Dent (please specify at time of order)
- 25 Inserted eye metal heddles per harness
- Built-in shelf
- Tool holder
- Kiln-dried ash construction
- Illustrated, printed manual (also available online)
- Standard AVL warranty - see appendix



Studio Dobby Loom Specifications

	<u>20" (50 cm)</u>	<u>30" (76 cm)</u>
Height	49" (124 cm)	49" (124 cm)
Overall Width	43" (109 cm)	53" (135 cm)
Front to Back	47" (119 cm)	47" (119 cm)
Weight	175 lbs (80 kgs)	225 lbs (102 kgs)

K-Series Loom

All K-Series Looms include:

- Compu-Dobby® with built-in loom control via web browser with WiFi and USB connectivity, built-in pattern storage and advanced diagnostics (please specify 110 or 220VAC)
- Countermarch dobby with center shed and light-touch treadling of up to 40 harnesses
- 8, 16, 24, 32 or 40 harnesses
- Polyester or metal heddles
- Digital warp tension and cloth advancing systems
- Standard bottom swing beater
- ½-Yard sectional warp beam
- Built-in shelf
- Kiln-dried ash construction
- 50, 75, 100 heddles/harness for 24", 32", 40" looms respectively
- Stainless steel reed: 6, 8, 10, 12 or 15 dent (please specify at time of order)
- Illustrated, printed manual (also available online)
- Standard AVL warranty - see appendix



K-Series Loom Specifications

	<u>24" (61 cm)</u>	<u>32" (76cm)</u>	<u>40" (102cm)</u>
Height	53" (135 cm)	53" (135 cm)	53" (135 cm)
Overall Width with Compu-Dobby & Warp Beam Handle	46 ½" (118 cm)	54 ½" (139 cm)	62 ½" (159 cm)
Length with sectional beam	58" (148 cm)	58" (148 cm)	58" (148 cm)
Footprint	48" x 37 ½" (122 x 95 cm)	48" x 45 ½" (122 x 116 cm)	48" x 53 ½" (122 x 136 cm)
Weight	291lbs (132 kgs)	343lbs (155.6 kgs)	395lbs (179.2 kgs)

Why "K-Series"? With digital control of so many features, the K-Series is the most advanced hand weaving loom bar none. Our head of engineering, Kim Mitchell was set loose to dream big, and dream big he did. We think he did such a masterful job we decided to name the loom after Kim.

V-Series Loom

All V-Series Looms include:

- Compu-Dobby® with E-Lift dobby assist (please specify 110 or 220VAC)
- 8, 16, 24, 32 or 40 harnesses
- Standard bottom swing beater
- Plain warp beam (including apron and rod)
- Locking brake warp tension system with foot pedal release
- Sturdy ratchet and pawl cloth storage control
- Built-in shelf
- Built-in track (for use with Tension Box)
- Kiln-dried ash construction
- 25 polyester heddles/harness
- Stainless steel reed: 6, 8, 10, 12 or 15 dent (please specify at time of order)
- Tool holder
- Illustrated, printed manual (also available online)
- Standard AVL warranty - see appendix



V-Series Loom Specifications

	<u>30" (76 cm)</u>	<u>40" (1 m)</u>
Height	49" (124 cm)	49" (124 cm)
Overall Width with Compu-Dobby & Warp Beam Handle	45" (114 cm)	55" (140 cm)
Length with sectional beam	50" (127 cm)	50" (127 cm)
Footprint	36 ¼ x 47" (92 x 119 cm)	46 ¼ x 47" (118 x 119 cm)
Weight	175 lbs (80 kgs)	270 lbs (122.5 kgs)

V-Series can accept 1 or 2 Plain Beams OR 1 Sectional Beam

A-Series Loom

All A-Series Looms Include:

- Compu-Dobby® (please specify 110 or 220VAC)
- 8, 16, 24, 32 or 40 harnesses
- Open frame, kiln-dried ash construction
- Automatic warp tensioning (tension arm and weight)
- Automatic cloth storage windup
- Bottom swing or overhead beater
- Flyshuttle options
- Pressure roller
- Automatic cloth advance option
- Metal or polyester heddles
- 100 heddles per harness
- Bench
- Rotary temples option
- Stainless steel reed: 6, 8, 10, 12 or 15 dent (please specify at time of order)
- Tool holder
- Illustrated, printed manual (also available online)
- Standard AVL warranty - see appendix



To complete your A-Series Loom order, you must select a beater and one or more beams.

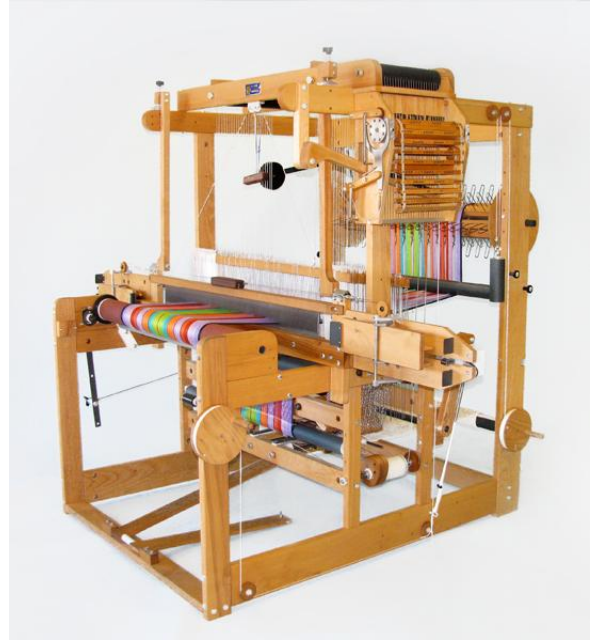
A-SeriesLoom Specifications

	30" (75cm)	40" (1m)	48" (1.22m)	60" (1.5m)	72" (1.83m)
Height	70" (1.78m)	70" (1.78m)	70" (1.78m)	70" (1.78m)	70" (1.78m)
Overall Width	45" (1.14m)	55" (1.4m)	62" 1.57m)	74" 1.88m)	86" (2.18m)
Front to Back	66" (1.67m)	66" (1.67m)	66" (1.67m)	66" (1.67m)	66" (1.67m)
Weight (8H)	358 lbs/163 kgs	368 lbs/167 kgs	418 lbs/190 kgs	468 lbs/223 kgs	518 lbs/235 kgs
Weight (16H)	365 lbs/166 kgs	375 lbs/170 kgs	425 lbs/193 kgs	475 lbs/226 kgs	525 lbs/238 kgs
Weight (24H)	375 lbs/170 kgs	385 lbs/174 kgs	435 lbs/197 kgs	485 lbs/230 kgs	535 lbs/242 kgs
Weight (40H)	440 lbs/198 kgs	450 lbs/202 kgs	485 lbs/230 kgs	535 lbs/242 kgs	585 lbs/266 kgs

Artisan Loom

All Artisan Looms Include:

- Mechanical dobby system, includes: dobby bars, dobby pegs, linkage strips, dobby peg wrench
- 8, 16, or 24 harnesses
- Open frame, kiln-dried ash construction
- Automatic warp tensioning (tension arm and weight)
- Automatic cloth storage windup
- Bottom swing or overhead beater
- Flyshuttle options
- Pressure roller
- Automatic cloth advance option
- Metal or polyester heddles
- 100 heddles per harness
- Bench
- Rotary temples option
- Stainless steel reed: 6, 8, 10, 12 or 15 dent (please specify at time of order)
- Tool holder
- Illustrated, printed manual (also available online)
- Standard AVL warranty - see appendix



To complete your Artisan Loom order, you must select a beater and one or more beams.

Specifications

	<u>40" (1m)</u>	<u>48" (1.22m)</u>	<u>60" (1.5m)</u>	<u>72" (1.83m)</u>
Height	70" (1.78m)	70" (1.78m)	70" (1.78m)	70" (1.78m)
Overall Width	55" (1.4m)	62" 1.57m)	75" 1.88m)	86" (2.18m)
Front to Back	66" (1.67m)	66" (1.67m)	66" (1.67m)	66" (1.67m)
Weight	338lbs/148 kgs	380lbs/172 kgs	395lbs/180 kgs	425lbs/193 kgs

Jacq3G Loom

Because the Jacq3G Loom is an A-Series Loom, it includes all the standard features of an A-Series:

- Open frame, kiln-dried ash construction
- Automatic warp tensioning (tension arm and weight)
- Automatic cloth storage windup
- Bottom swing or overhead beater
- Flyshuttle options
- Pressure roller
- Automatic cloth advance option
- Bench
- Rotary temples option
- Stainless steel reed: 6, 8, 10, 12 or 15 dent (please specify at time of order)
- Tool holder
- Illustrated, printed manual (also available online)
- Standard AVL warranty - see appendix



In addition to the A-Series standard features, the Jacq3G also includes:

- AVL Jacquard system with 360 hooks with individual thread controls. All AVL Jacquard systems can be expanded with additional modules of 120 hooks each. The maximum total number of hooks depends on the loom's width.
- RigidFrame™ system, which makes installation easy and ensures the proper loom rigidity to accommodate your AVL Jacquard system
- AVL Compu-Jacq™ control system with enhanced communications for serial, USB and Ethernet connectivity
- Dial-a-Sett™ system allowing dynamic thread density adjustments
- 1080R Inserted-eye, twisted wire heddles

To complete your Jacq3G order, you must add a beater and one or two beams.

Jacq3G Loom Power Requirements

Loom Electrical Input, Max	Per module: 3 amps @ 110 volt or 1.5 amps @ 220 volt 4 modules: 12 amps @ 110 volt or 6 amps @ 220 volt
A-Lift Pneumatic Input, Max	5 CFM @ 100 PSI
E-Lift Electrical Input, Max	8 amps @ 110 volt or 4 amps @ 220 volt

The Jacq3G is state-of-the-art in computerized jacquard hand weaving. Like all jacquards, Jacq3G enables individual control over each thread, yielding the equivalent of unlimited "harnesses." The design possibilities are endless!

Jacq3G Loom Specifications

	30" (75cm)	40" (1m)	48" (1.22m)	60" (1.5m)	72" (1.83m)
Height	90" (2.14m)	90" (2.14m)	90" (2.14m)	90" (2.14m)	90" (2.14m)
Overall Width	45" (1.14m)	55" (1.4m)	62" 1.57m)	74" 1.88m)	86" (2.18m)
Front to Back	84" (1.67m)	84" (1.67m)	84" (1.67m)	84" (1.67m)	84" (1.67m)
Weight, Base Loom (3 Mod.)	400lbs/181kgs	410lbs/186kgs	460lbs/208kgs	490lbs/222kgs	560lbs/254kgs
Weight per add'l module	16lbs (7.3kgs)	16lbs (7.3kgs)	16lbs (7.3kgs)	16lbs (7.3kgs)	16lbs (7.3kgs)
Weight, RigidFrame	75lbs (34kgs)	80lbs (36kgs)	85lbs (38kgs)	90lbs (41kgs)	100lbs (45kgs)
Weight, A-Lift	25lbs (11kgs)	25lbs (11kgs)	25lbs (11kgs)	25lbs (11kgs)	25lbs (11kgs)
Weight, E-Lift	40lbs (18kgs)	40lbs (18kgs)	40lbs (18kgs)	40lbs (18kgs)	40lbs (18kgs)
Maximum No of Hooks	840	1200	1440	1800	2160
(No of Modules for Max)	7	10	12	15	18

Jacq3G Loom Control Box Specifications

Height	12" (0.3 m)
Overall Width	24" (0.61 m)
Front to Back	24" (0.61 m)
Weight, Base Loom (3 modules)	35 lbs (15.9 kgs)

Jacq3G Loom Conversion System

The Jacq3G Conversion System converts A-Series Full Frame (Modular/PDL/TDL/UDL) and even Professional Dobby Rug Loom frames to Jacquard. System includes:

- AVL Jacquard system with 360 hooks for individual thread control. All AVL Jacquard systems can be expanded with additional modules of 120 hooks each. The total number of hooks depends on loom width.
- AVL Compu-Jacq™ control system with enhanced communications for serial, USB and Ethernet connectivity.
- Dial-a-Sett™ system which allows for dynamic thread density adjustments.
- RigidFram™ system which makes installation easy and ensures the proper rigidity to convert your loom frame to accommodate the AVL Jacquard system.
- Frame extensions or separation roller extender (PDRL excluded)
- JacqPoint software

The following chart describes the maximum hook configuration for Jacquard conversions for each AVL loom frame. The minimum number of hooks for any loom is 360 (3 modules of 120 hooks each).

	Max No. of Hooks	(No. of Modules)
30" A-Series and Full Frame (1988-2004)	840	7
40" A-Series and Full Frame (1988-2004)	1200	10
40" Full Frame (1984-1987)	1080	9
40" Full Frame (1977-1983)	960	8
48" (4') Rug Loom Frame	1560	13
48" A-Series and Full Frame (1988-2004)	1440	12
48" Full Frame (1984-1987)	1320	11
48" Full Frame (1977-1983)	1200	10
60" A-Series and Full Frame (1988-2004)	1800	15
60" Full Frame (1984-1987)	1680	14
60" Full Frame (1977-1983)	1560	13
72" (6') Rug Loom Frame	2280	19
72" A-Series and Full Frame (1988-2004)	2160	18
72" Full Frame (1984-1987)	2040	17
72" Full Frame (1977-1983)	1920	16
8' Rug Loom Frame	3000	25
10' Rug Loom Frame	3720	31
12' Rug Loom Frame	4440	37
15' Rug Loom Frame	4800	40

Jacq3G conversion with A-Lift system

- Includes A-Lift pneumatically actuated shed opening system
- Jacquard A-Lift technical requirements for customer-supplied compressor: 5CFM @ 100PSI max

Jacq3G with E-Lift system

- Includes E-Lift electrically actuated shed opening system
- Jacquard E-Lift technical requirements: 8A @ 110V or 4A @ 220V (please specify voltage)
- Maximum 2,160 hooks (18 modules)

Professional Dobby Rug Loom

All AVL Dobby Rug Looms Include:

- Air-powered warp tension
- Air-powered shed opening
- Sliding beater with high strength bearings
- Mechanical dobby system, including 30 dobby bars with pegs, 5 linkage strips and a dobby peg wrench
- 8, 12 or 16 harnesses
- Extra sturdy kiln-dried hardwood or steel construction
- Steel heddles, inserted eye
- Stainless steel reed, 6, 8, 10, 12 or 15 dent (please specify at time of order)
- Tool holder
- Illustrated, printed manual (also available online)
- Standard AVL warranty - see appendix



Note: 4-6' (1.2-1.8m) looms have all hardwood frames, 8' (2.4m) looms use powder coated steel for all crossmembers, and 10' (3m) looms and up are mostly powder coated steel.

	<u>4' (1.2m)</u>	<u>6' (1.8m)</u>	<u>8' (2.4m)</u>	<u>10' (3m)</u>
Height	75" (1.9m)	75" (1.9m)	75" (1.9m)	75" (1.9m)
Overall Width	66" (1.67m)	90" (2.29m)	114" (2.9m)	138" (3.5m)
Front to Back	84" (2.15m)	84" (2.15m)	84" (2.15m)	84" (2.15m)
No. of Heddles	400	600	800	1,000
Weight	900 lbs/409 kg	1300 lbs/591 kg	1600 lbs/727 kg	1900 lbs/864 kg

	<u>12' (3.65m)</u>	<u>15' (4.5m)</u>	<u>20' (6m)</u>
Height	75" (1.9m)	75" (1.9m)	75" (1.9m)
Overall Width	161" (4.1m)	197" (5m)	257" (6.5m)
Front to Back	84" (2.15m)	84" (2.15m)	84" (2.15m)
No. of Heddles	1,200	1,200	1,200
Weight	2300 lbs/1045 kg	2675 lbs/1215 kg	3650 lbs/1655 kg

To complete your rug loom order, you must choose one or two Rug Loom Warp Beams.

Crating and Handling

\$0.00 to \$39.00	\$1.95
\$40.00 to \$99.00	\$6.95
\$100.00 to \$199.00	\$9.95
\$200.00 to \$299.00	\$11.95
\$300.00 to \$399.00	\$13.95
\$400.00 to \$499.00	\$15.95
\$500.00 to \$599.00	\$17.95
\$600.00 to \$699.00	\$19.95
\$700.00 to \$799.00	\$21.95
\$800.00 to \$899.00	\$23.95
\$900.00 to \$999.00	\$25.95
Reeds up to 8'	\$15.95
Reeds greater than 8'	\$20.95
Computer Hardware	\$41.95
Computer Software	\$4.95
Warp Beams	\$25.95
Little Weaver Loom	\$41.95
30-40" Looms, Knocked Down	\$379.95
48-60" Looms, Knocked Down	\$399.95
72" Looms, Knocked Down	\$579.95
Rug Looms	Call
Studio Dobby Looms, Knocked Down	\$279.95
Studio Dobby Looms, Partially Assembled	\$429.95
Workshop Dobby Looms, Knocked Down	\$189.95
Home Looms, Knocked Down	\$189.95
Home Looms, Assembled	\$429.95
Jacq3G Looms (30-48")	\$679.95
Jacq3G Looms (60-72")	\$719.95
Export Pallet, Plastic	\$47.00
Pre-Treated Export Crate, Wood	\$258.00

Shipping Policy & Methods

Looms are available assembled for your convenience. Assembled looms require special crating, handling and shipping. Please call for pricing.

We will assist you in arranging shipping with the carrier of your choice. We will provide you a shipping estimate at the time of your purchase. This estimate is subject to change by the carrier and you will be responsible for all shipping costs. We ship via freight carrier, UPS, FedEx and US Postal Service.

Warranty Information

Limited Warranty: The benefits of this warranty accrue solely to the original purchaser of AVL Looms, Inc. products, as defined below.

Your warranty covers:

Looms: AVL Looms, Inc., a California corporation ("AVL") warrants to the original purchaser of any AVL loom (each, a "Product") that the Product will be free from defects in materials and workmanship during the limited warranty period described herein. The limited warranty coverage begins (a) the day the Product is installed if installed by a professional from AVL, or (b) on the date of shipment from AVL to the original purchaser if the Product is not installed by AVL (the "Effective Date"). Except as set forth under the section entitled "What is Excluded?" below, AVL will, for a period of two (2) years from the Effective Date (the "Original Warranty Period"), repair or replace the defective part(s) of the Product with a repaired, renewed, or comparable part (whichever is deemed necessary or proper by AVL) if it becomes defective or inoperative or fails to perform according to AVL's specifications. Any repair during the Original Warranty Period will be carried out without charge to you for parts (except applicable taxes, if any). You will be responsible for all labor in connection with installation of the parts and service upon the Product, as well as the cost of shipping involved.

Accessories, Loom Upgrade Parts, and Replacement Parts: Subject to the limitation contained in subsection (i) under the section entitled "What is Excluded?" below, AVL warrants to the original purchaser of any accessory, loom upgrade parts, or loom replacement parts (the "Additional Part") that are sold by AVL that such Additional Part will be free from defects in materials and workmanship for ninety (90) days from the date of purchase. In the event that any Additional Part is physically damaged or physically defective and if such defective Additional Part is returned to AVL within ninety (90) days of the date of purchase, AVL will provide a replacement Additional Part at no charge. The sole remedy for this warranty shall be limited to the replacement of the defective Additional Part. You are responsible for all shipping charges (including applicable taxes) incurred with returning the defective Additional Part.

Software Media: Subject to the limitation contained in subsection (i) under the section entitled "What is Excluded?" below, AVL warrants to the original purchaser of any physical diskette (or downloaded software) and documentation ("Software Media") that is sold by AVL that such Software Media will be free from defects in materials and workmanship for ninety (90) days from the date of purchase. In the event that the Software Media is physically damaged or physically defective and if such defective Software Media is returned to AVL within ninety (90) days of the date of purchase, AVL will provide replacement Software Media at no charge. The sole remedy for this warranty shall be limited to the replacement of the defective Software Media. You are responsible for all shipping charges (including applicable taxes) incurred with returning the defective Software Media. To the extent any additional warranty coverage may be available with respect to the Software Media, it is offered by the third-party manufacturer and you must contact them directly.

All Products and their components (including replacement Product and its components) are covered only for the Original Warranty Period. When the warranty on the original Product or Software Media expires, the warranty on any replacement Product, components, or Software Media also expires. After two (2) years from the Effective Date, you pay for any replacement or repair, including all parts, all labor and shipping charges (including applicable taxes).

Your warranty does not cover:

- a. Labor charges for installation or set-up of the Product, as well as any labor charges required to install, disassemble, troubleshoot, or reassemble the Product.
- b. Any taxes imposed on AVL for Product replacement or repair under this warranty.
- c. Installation, performance of, or repair of: cabling, electrical, or accessory attachments used with the Product.

- d. Product replacement or repair because of misuse, accident, repair by any party other than AVL, or other cause not within the control of AVL. Please note that removing any parts from the Product for any reason voids the warranty.
- e. Incidental or consequential damages resulting from the Product.
- f. A Product that has been modified or adapted to enable it to operate in any country other than the United States or any repair of Products damaged by these modifications.
- g. Electrical and pneumatic components, each of which carries a one (1) year warranty from the Effective Date.
- h. Jacquard components function beyond 98%. A Jacquard module is considered to be operating within specification if 98% of all hooks are operating as commanded.
- i. Computing equipment, such as a Personal Digital Assistant or a Personal Computer, which are manufactured by a third party(ies) and which may be under warranty through the original manufacturer. AVL is not responsible for any warranty coverage that may be offered concerning these products and you must contact those manufacturers directly regarding any available warranty coverage.
- j. The performance or functionality of any software that is sold either together or separate from the Product. The AVL warranty covers only defects in the Software Media, namely the CD-ROM media such as a broken CD-ROM or a defect in the CD-ROM that would prevent the CD-ROM from being read by your personal computer's CD-ROM drive.

Order Cancellation Policy: Unfulfilled orders for standard equipment may be cancelled up to 45 days after order placement. Eligible deposits are fully refundable, less 15% re-stocking fee on the total price of the cancelled equipment and handling charges. Cancellation is not allowed after 45 days and therefore deposits are not eligible for refund. Deposits on custom equipment are not eligible for refund under any circumstances.

Product Return Policy: Any order that has left AVL in transit to the customer is considered fulfilled. Parts and accessories not covered under warranty must be returned to AVL within 60 days from the date of shipment from AVL. The purchase price of the item(s) is refundable less a 15% re-stocking fee based on the total purchase price. No refunds will be given on shipping or handling. The buyer is responsible to return the merchandise in "as new" condition at their expense. Any item received showing wear or damage is not eligible for return and will be promptly returned to the customer COD unless some other arrangement is made. Looms and custom-made items, special order items, parts made for pre-1998 looms, used and reconditioned items are not eligible for return.

MAKE SURE YOU KEEP: Please keep your sales receipt or other document showing proof of purchase.

TO GET WARRANTY SERVICE: If you believe you need service for your Product, contact Customer Support at 1-800-626-9615. The representative will address the issue by telephone.

AVL'S RESPONSIBILITY FOR MALFUNCTIONS AND DEFECTS IN THE PRODUCTS AND SOFTWARE MEDIA IS LIMITED TO REPAIR AND REPLACEMENT AS SET FORTH IN THIS LIMITED WARRANTY. AVL DOES NOT MAKE ANY WARRANTY, REPRESENTATION, OR PROMISE NOT EXPRESSLY SET FORTH IN THIS AGREEMENT WITH RESPECT TO THE PRODUCT OR THE SOFTWARE MEDIA. AVL DISCLAIMS AND EXCLUDES ALL OTHER WARRANTIES, EXPRESS OR IMPLIED, INCLUDING, WITHOUT LIMITATION, ANY IMPLIED WARRANTY OF MERCHANTABILITY OR FITNESS. AVL SHALL HAVE NO LIABILITY FOR ANY DIRECT, SPECIAL, CONSEQUENTIAL, OR INCIDENTAL DAMAGES RELATING TO THE PRODUCT OR SOFTWARE MEDIA, INCLUDING ANY LOSS OF PROFIT, REVENUE, OR OTHERWISE AS A RESULT OF THE PRODUCT OR SOFTWARE MEDIA BEING INOPERABLE AT ANY TIME OR FOR ANY REASON.

AVL MAKES NO WARRANTY THAT THE SOFTWARE SOLD EITHER TOGETHER OR SEPARATE FROM THE PRODUCT WILL FUNCTION WITHOUT INTERRUPTION OR OTHERWISE BE FREE OF ANOMALIES, ERRORS, OR "BUGS".

Pricing

Additional items not listed here are available on our website www.avlusa.com or by request. International pricing may vary. Please contact us or our agents for international pricing.

Categories at a Glance:

Little Weaver
Home Loom
Workshop Dobby Loom
Studio Dobby Loom
V-Series Loom
A-Series Loom
Artisan Loom
Jacq3G Jacquard Loom
Jacq3G Conversions
Rug Loom (Professional Dobby Rug Loom)
Accessories and Additions
Aprons
Beams for Full Frame Looms
Beams for Rug Looms
Beams for Smaller Looms
Beater Additions for Rug Looms
Beaters for Full frame Looms
Bobbin and Spool Winding Equipment
Compu-Dobby® System
Counters
Harness and Treadle Additions
Heddles and Tie-up Cords
Lift Assist Systems
Raddles
Reeds
Shuttles and Bobbins
Software
Tension Box and Mounting
Warping Equipment

Part Number	Description	Price
Little Weaver v.2.0 See page 4 for loom details.		
LW16v2-8H	Little Weaver, 16", 8 Harness	\$3,611.00
LW16v2-16H	Little Weaver, 16", 16 Harness	\$4,502.25
LW16v2-24H	Little Weaver, 16", 24 Harness	\$5,422.25

Home Loom See page 5 for loom details. Includes 8harnesses.		
HL24-8H-Poly	Home Loom, 24", Polyester Heddles	\$5,050.75
HL24-8H-Mtl	Home Loom, 24", Steel Heddles	\$5,825.25
HL40-8H-Poly	Home Loom, 40", Polyester Heddles	\$5,832.25
HL40-8H-Mtl	Home Loom, 40", Steel Heddles	\$6,607.75
HL48-8H-Poly	Home Loom, 48", Polyester Heddles	\$6,479.00
HL48-8H-Mtl	Home Loom, 48", Steel Heddles	\$7,261.50

Workshop Dobby Loom See page 6 for loom details.		
3010	Workshop Dobby Loom, 16", 8 Harness	\$5,359.50
3020	Workshop Dobby Loom, 16", 16 Harness	\$6,385.25
3030	Workshop Dobby Loom, 16", 24 Harness	\$7,410.50
3040	Workshop Dobby Loom, 24", 8 Harness	\$6,026.00
3050	Workshop Dobby Loom, 24", 16 Harness	\$7,046.50
3060	Workshop Dobby Loom, 24", 24 Harness	\$8,070.00

Studio Dobby Loom See page 7 for loom details.		
2010	Studio Dobby Loom, 20", 16 Harness, Metal Heddles	\$12,736.75
2030	Studio Dobby Loom, 20", 24 Harness, Metal Heddles	\$14,169.00
2010-30	Studio Dobby Loom, 30", 16 Harness, Metal Heddles	\$13,455.50
2030-30	Studio Dobby Loom, 30", 24 Harness, Metal Heddles	\$14,887.25

K-Series Loom See page 8 for loom details.		
K24-8H	K-Series Compu-Dobby® V Loom, 24", 8 Harnesses	\$11,366.50
K24-16H	K-Series Compu-Dobby® V Loom, 24", 16 Harnesses	\$14,339.75
K24-24H	K-Series Compu-Dobby® V Loom, 24", 24 Harnesses	\$17,321.25
K24-32H	K-Series Compu-Dobby® V Loom, 24", 32 Harnesses	\$20,301.00
K24-40H	K-Series Compu-Dobby® V Loom, 24", 40 Harnesses	\$23,274.75
K32-8H	K-Series Compu-Dobby® V Loom, 32", 8 Harnesses	\$11,919.75
K32-16H	K-Series Compu-Dobby® V Loom, 32", 16 Harnesses	\$15,048.25
K32-24H	K-Series Compu-Dobby® V Loom, 32", 24 Harnesses	\$18,183.75
K32-32H	K-Series Compu-Dobby® V Loom, 32", 32 Harnesses	\$21,319.25
K32-40H	K-Series Compu-Dobby® V Loom, 32", 40 Harnesses	\$24,454.00
K40-8H	K-Series Compu-Dobby® V Loom, 40", 8 Harnesses	\$12,499.75

K40-16H	K-Series Compu-Dobby® V Loom, 40", 16 Harnesses	\$15,797.00
K40-24H	K-Series Compu-Dobby® V Loom, 40", 24 Harnesses	\$19,094.00
K40-32H	K-Series Compu-Dobby® V Loom, 40", 32 Harnesses	\$22,397.25
K40-40H	K-Series Compu-Dobby® V Loom, 40", 40 Harnesses	\$25,695.00

V-Series Loom

See page 9 for loom details.

V30-16H-CD5-EL3	V-Series Compu-Dobby® IV Loom, 30", 16 Harnesses	\$15,461.00
V30-24H-CD5-EL3	V-Series Compu-Dobby® IV Loom, 30", 24 Harnesses	\$17,090.00
V30-32H-CD5-EL3	V-Series Compu-Dobby® IV Loom, 30", 32 Harnesses	\$17,904.75
V30-40H-CD5-EL3	V-Series Compu-Dobby® IV Loom, 30", 40 Harnesses	\$19,533.25
V40-16H-CD5-EL3	V-Series Compu-Dobby® IV Loom, 40", 16 Harnesses	\$17,833.50
V40-24H-CD5-EL3	V-Series Compu-Dobby® IV Loom, 40", 24 Harnesses	\$19,462.50
V40-32H-CD5-EL3	V-Series Compu-Dobby® IV Loom, 40", 32 Harnesses	\$20,278.00
V40-40H-CD5-EL3	V-Series Compu-Dobby® IV Loom, 40", 40 Harnesses	\$21,801.75
NPL-00875	Dynamic Tension Arm System Upgrade, 30"	\$370.25

A-Series Loom

Beam(s) and Beater sold separately. See page 10 for loom details.

A30-8H-CD4	A-Series Compu-Dobby® IV, 30", 8 Harness	\$13,384.25
A40-8H-CD4	A-Series Compu-Dobby® IV, 40", 8 Harness	\$14,000.50
A48-8H-CD4	A-Series Compu-Dobby® IV, 48", 8 Harness	\$14,459.50
A60-8H-CD4	A-Series Compu-Dobby® IV, 60", 8 Harness	\$14,866.50
A72-8H-CD4	A-Series Compu-Dobby® IV, 72", 8 Harness	\$17,334.50
A30-16H-CD4	A-Series Compu-Dobby® IV, 30", 16 Harness	\$14,206.00
A40-16H-CD4	A-Series Compu-Dobby® IV, 40", 16 Harness	\$14,615.25
A48-16H-CD4	A-Series Compu-Dobby® IV, 48", 16 Harness	\$15,073.00
A60-16H-CD4	A-Series Compu-Dobby® IV, 60", 16 Harness	\$15,483.00
A72-16H-CD4	A-Series Compu-Dobby® IV, 72", 16 Harness	\$17,945.00
A30-24H-CD4	A-Series Compu-Dobby® IV, 30", 24 Harness	\$16,258.00
A40-24H-CD4	A-Series Compu-Dobby® IV, 40", 24 Harness	\$16,667.00
A48-24H-CD4	A-Series Compu-Dobby® IV, 48", 24 Harness	\$17,121.75
A60-24H-CD4	A-Series Compu-Dobby® IV, 60", 24 Harness	\$18,295.25
A72-24H-CD4	A-Series Compu-Dobby® IV, 72", 24 Harness	\$21,229.00
A30-32H-CD4-A	A-Series Compu-Dobby® IV, 30", 32 Harness with A-Lift System	\$22,283.50
A40-32H-CD4-A	A-Series Compu-Dobby® IV, 40", 32 Harness with A-Lift System	\$22,694.00
A48-32H-CD4-A	A-Series Compu-Dobby® IV, 48", 32 Harness with A-Lift System	\$23,149.50
A60-32H-CD4-A	A-Series Compu-Dobby® IV, 60", 32 Harness with A-Lift System	\$23,557.75
A72-32H-CD4-A	A-Series Compu-Dobby® IV, 72", 32 Harness with A-Lift System	\$27,256.00
A30-32H-CD4-E	A-Series Compu-Dobby® IV, 30", 32 Harness with E-Lift System	\$25,215.50
A40-32H-CD4-E	A-Series Compu-Dobby® IV, 40", 32 Harness with E-Lift System	\$25,625.50
A48-32H-CD4-E	A-Series Compu-Dobby® IV, 48", 32 Harness with E-Lift System	\$26,080.79
A60-32H-CD4-E	A-Series Compu-Dobby® IV, 60", 32 Harness with E-Lift System	\$26,490.25
A72-32H-CD4-E	A-Series Compu-Dobby® IV, 72", 32 Harness with E-Lift System	\$30,186.75
A30-40H-CD4-A	A-Series Compu-Dobby® IV, 30", 40 Harness with A-Lift System	\$28,675.25
A40-40H-CD4-A	A-Series Compu-Dobby® IV, 40", 40 Harness with A-Lift System	\$29,259.50
A48-40H-CD4-A	A-Series Compu-Dobby® IV, 48", 40 Harness with A-Lift System	\$30,082.75

A60-40H-CD4-A	A-Series Compu-Dobby® IV, 60", 40 Harness with A-Lift System	\$30,860.75
A72-40H-CD4-A	A-Series Compu-Dobby® IV, 72", 40 Harness with A-Lift System	\$33,646.75
A30-40H-CD4-E	A-Series Compu-Dobby® IV, 30", 40 Harness with E-Lift System	\$30,255.75
A40-40H-CD4-E	A-Series Compu-Dobby® IV, 40", 40 Harness with E-Lift System	\$30,837.75
A48-40H-CD4-E	A-Series Compu-Dobby® IV, 48", 40 Harness with E-Lift System	\$32,245.25
A60-40H-CD4-E	A-Series Compu-Dobby® IV, 60", 40 Harness with E-Lift System	\$33,606.50
A72-40H-CD4-E	A-Series Compu-Dobby® IV, 72", 40 Harness with E-Lift System	\$35,965.00

Artisan Loom

Beam(s) and Beater sold separately. See page 11 for loom details.

A30-8H-MD	Artisan Mechanical Dobby, 30", 8 Harness	\$12,893.75
A40-8H-MD	Artisan Mechanical Dobby, 40", 8 Harness	\$13,453.75
A48-8H-MD	Artisan Mechanical Dobby, 48", 8 Harness	\$13,915.00
A60-8H-MD	Artisan Mechanical Dobby, 60", 8 Harness	\$14,321.00
A72-8H-MD	Artisan Mechanical Dobby, 72", 8 Harness	\$16,786.50
A30-16H-MD	Artisan Mechanical Dobby, 30", 16 Harness	\$13,660.25
A40-16H-MD	Artisan Mechanical Dobby, 40", 16 Harness	\$14,068.00
A48-16H-MD	Artisan Mechanical Dobby, 48", 16 Harness	\$14,534.25
A60-16H-MD	Artisan Mechanical Dobby, 60", 16 Harness	\$14,933.75
A72-16H-MD	Artisan Mechanical Dobby, 72", 16 Harness	\$17,400.00
A30-24H-MD	Artisan Mechanical Dobby, 30", 24 Harness	\$15,710.75
A40-24H-MD	Artisan Mechanical Dobby, 40", 24 Harness	\$16,121.25
A48-24H-MD	Artisan Mechanical Dobby, 48", 24 Harness	\$16,576.50
A60-24H-MD	Artisan Mechanical Dobby, 60", 24 Harness	\$16,986.00
A72-24H-MD	Artisan Mechanical Dobby, 72", 24 Harness	\$20,682.00

Jacq3G Jacquard Loom

Beam(s) and Beater sold separately. See page 12 for loom details.

A30-360HK-A	Jacq3G, 30" with A-Lift System	\$34,175.75
A40-360HK-A	Jacq3G, 40" with A-Lift System	\$34,408.00
A48-360HK-A	Jacq3G, 48" with A-Lift System	\$34,697.75
A60-360HK-A	Jacq3G, 60" with A-Lift System	\$35,261.25
A72-360HK-A	Jacq3G, 72" with A-Lift System	\$35,407.75
A30-360HK-E	Jacq3G, 30" with E-Lift System	\$37,795.25
A40-360HK-E	Jacq3G, 40" with E-Lift System	\$38,050.00
A48-360HK-E	Jacq3G, 48" with E-Lift System	\$38,342.00
A60-360HK-E	Jacq3G, 60" with E-Lift System	\$38,903.75
A72-360HK-E	Jacq3G, 72" with E-Lift System	\$39,051.00
HK-120	Additional 120 Hook Module	\$5,420.50

Jacq3G Conversions

See page 14 for details.

Jacq3G Conversion System with E-Lift System

Includes E-Lift electrically actuated shed opening system. Requires 8A @110V OR 4A @ 220V (please specify voltage). Maximum 2,160 hooks (18 modules)

CE30-360HK	Jacq3G, 30" with E-Lift System	\$25,909.50
CE40-360HK	Jacq3G, 40" with E-Lift System	\$25,963.50
CE48-360HK	Jacq3G, 48" with E-Lift System	\$26,035.25

CE60-360HK	Jacq3G, 60" with E-Lift System	\$26,106.00
CE72-360HK	Jacq3G, 72" with E-Lift System	\$26,181.50

Jacq3G Conversion System with A-Lift System

Includes A-Lift pneumatically actuated shed opening system. Customer to supply compressor: 5CFM @ 100 PSI max.

CA30-360HK	Jacq3G, 30" with A-Lift System	\$22,265.75
CA40-360HK	Jacq3G, 40" with A-Lift System	\$22,321.50
CA48-360HK	Jacq3G, 48" with A-Lift System	\$22,391.50
CA60-360HK	Jacq3G, 60" with A-Lift System	\$22,463.50
CA72-360HK	Jacq3G, 72" with A-Lift System	\$22,539.25

Professional Dobby Rug Loom

See page 15 for loom details.

1021	Rug Loom, 4' (All Hardwood), 8 Harness	\$18,742.25
1022	Rug Loom, 6' (All Hardwood), 8 Harness	\$20,178.00
1023	Rug Loom, 8' (Hardwood and Steel), 8 Harness	\$23,870.00
1024	Rug Loom, 10' (All Steel), 8 Harness	\$31,311.00
1025	Rug Loom, 12' (All Steel), 8 Harness	\$33,882.50
1026	Rug Loom, 15' (All Steel), 8 Harness	\$42,041.75
1027	Rug Loom, 20' (All Steel), 8 Harness	\$44,336.00
1031	Rug Loom, 4' (All Hardwood), 12 Harness	\$21,203.25
1032	Rug Loom, 6' (All Hardwood), 12 Harness	\$23,461.75
1033	Rug Loom, 8' (Hardwood and Steel), 12 Harness	\$28,382.50
1034	Rug Loom, 10' (All Steel), 12 Harness	\$36,028.25
1035	Rug Loom, 12' (All Steel), 12 Harness	\$36,470.50
1036	Rug Loom, 15' (All Steel), 12 Harness	\$44,185.25
1042	Rug Loom, 20' (All Steel), 12 Harness	\$49,271.25
1040	Rug Loom, 4' (All Hardwood), 16 Harness	\$23,254.75
1041	Rug Loom, 6' (All Hardwood), 16 Harness	\$25,510.50
1043	Rug Loom, 8' (Hardwood and Steel), 16 Harness	\$32,270.75
1039	Rug Loom, 10' (All Steel), 16 Harness	\$41,853.75
1045	Rug Loom, 12' (All Steel), 16 Harness	\$41,597.75
1037	Rug Loom, 15' (All Steel), 16 Harness	\$50,197.00
1038	Rug Loom, 20' (All Steel), 16 Harness	\$57,712.25

Loom Add-Ons

AA2-SYS-A-BS, AA2-SYS-A-OHB	Automatic Cloth Advance System (4 to 120 ppi)	\$1,043.50
RT-SYS, RT- KL24/32/40-SYS	Rotary Temple (for A-Series, K-Series and Rug Looms)	\$1,271.75
SVR-SYS	Selvage Rollers (set of 2, requires Track and Mounting System)	\$419.00
662	Beater Weight (adds weight to beater for heavy beating)	\$135.00
KL-BTR-ASSY4-24	Beater Weight, 24" K-Series (adds weight to beater for heavy beating)	\$127.00
KL-BTR-ASSY4-32	Beater Weight, 32" K-Series (adds weight to beater for heavy beating)	\$131.00
KL-BTR-ASSY4-40	Beater Weight, 40" K-Series (adds weight to beater for heavy beating)	\$135.00

663	Tension Arm Half-Weight	\$129.25
668	Additional Cloth Storage Weight	\$149.50
930	Bench, Long (for 48" loom)	\$385.75
3200	Bench, Short (for 40" loom)	\$364.50
362	Bench Storage Bag (for all looms)	\$93.75
932	Castle Storage Shelf (Home Loom)	\$168.50
940	Automatic Warp Tension System (Home Loom)	\$101.25
1210	Air-Powered Automatic Cloth Take-up System for Rug Loom	\$2,792.75
1215	Air-Powered Automatic Cloth Advance System for Rug Loom	\$3,822.50
1220	Auto-Warp Let-Off for Rug Loom	\$948.75
CASTER-KL, CASTER-AL	Casters Kit (set of 4)	\$435.25
BM-FLNG	Warp Beam Flanges (for Plain Beams)	\$262.25

Replacement Aprons

HL-APR-40	Apron, 40" Home Loom	\$101.25
HL-APR-48	Apron, 48" Home Loom	\$101.25
SL-APR-20	Apron, 20" Studio Dobby Loom	\$93.75
VL-APR-30	Apron, 30" V-Series Loom	\$104.00
WL-APR-16	Apron, 16" Workshop Dobby Loom Plain Warp Beam	\$93.75
WL-APR-24	Apron, 24" Workshop Dobby Loom Plain Warp Beam	\$97.75
AL-BM-APR-30	Apron, Warp Beam, 30" A-Series	\$104.00
AL-BM-APR-40	Apron, Warp Beam, 40" A-Series	\$104.00
AL-BM-APR-48	Apron, Warp Beam, 48" A-Series	\$104.00
AL-BM-APR-60	Apron, Warp Beam, 60" A-Series	\$104.00
AL-BM-APR-72	Apron, Warp Beam, 72" A-Series	\$104.00
AL-CS-APR-30	Apron, Cloth Storage, 30" A-Series Loom	\$127.50
AL-CS-APR-40	Apron, Cloth Storage, 40" A-Series Loom	\$127.50
AL-CS-APR-48	Apron, Cloth Storage, 48" A-Series Loom	\$127.50
AL-CS-APR-60	Apron, Cloth Storage, 60" A-Series Loom	\$127.50
AL-CS-APR-72	Apron, Cloth Storage, 72" A-Series Loom	\$127.50
FF-CS-APR-48	Apron, Cloth Storage, 48" Full Frame Loom	\$127.50
FF-CS-APR-60	Apron, Cloth Storage, 60" Full Frame Loom	\$127.50
FL-CS-APR-40	Apron, Cloth Storage, 40" Folding Loom	\$127.50
IL-BM-APR-24	Apron, Cloth Storage / Warp Beam, 24" IDL	\$145.50
IL-BM-APR-40	Apron, Cloth Storage / Warp Beam, 40" IDL	\$145.50
IL-BM-APR-60	Apron, Cloth Storage / Warp Beam, 60" IDL	\$145.50

IL-BM-APR-72	Apron, Cloth Storage / Warp Beam, 72" IDL	\$145.50
J3G-BM-APR-30	Apron, Warp Beam, 30" J3G Loom	\$104.00
J3G-BM-APR-40	Apron, Warp Beam, 40" J3G Loom	\$104.00
J3G-BM-APR-48	Apron, Warp Beam, 48" J3G Loom	\$104.00
J3G-BM-APR-60	Apron, Warp Beam, 60" J3G Loom	\$104.00
J3G-BM-APR-72	Apron, Warp Beam, 72" J3G Loom	\$104.00
J3G-CS-APR-30	Apron, Cloth Storage, 30" J3G Loom	\$127.50
J3G-CS-APR-40	Apron, Cloth Storage, 40" J3G Loom	\$127.50
J3G-CS-APR-48	Apron, Cloth Storage, 48" J3G Loom	\$127.50
J3G-CS-APR-60	Apron, Cloth Storage, 60" J3G Loom	\$127.50
J3G-CS-APR-72	Apron, Cloth Storage, 72" J3G Loom	\$127.50
RL-CS-APR-4	Apron, Cloth Storage, 4' Rug Loom	\$145.50
RL-CS-APR-4X100	Apron, Cloth Storage, 4' Rug Loom Extra Long	\$443.25
RL-CS-APR-6	Apron, Cloth Storage, 6' Rug Loom	\$145.50
RL-CS-APR-6X100	Apron, Cloth Storage, 6' Rug Loom Extra Long	\$443.25
RL-CS-APR-8	Apron, Cloth Storage, 8' Rug Loom	\$280.50
RL-CS-APR-8X100	Apron, Cloth Storage, 8' Rug Loom Extra Long	\$443.25
RL-CS-APR-10	Apron, Cloth Storage, 10' Rug Loom	\$280.50
RL-CS-APR-10X100	Apron, Cloth Storage, 10' Rug Loom Extra Long	\$443.25
RL-CS-APR-12	Apron, Cloth Storage, 12' Rug Loom	\$414.50
RL-CS-APR-12X100	Apron, Cloth Storage, 12' Rug Loom Extra Long	\$549.75
RL-CS-APR-15	Apron, Cloth Storage, 15' Rug Loom	\$414.50
RL-CS-APR-15X100	Apron, Cloth Storage, 15' Rug Loom Extra Long	\$549.75
RL-CS-APR-20	Apron, Cloth Storage, 20' Rug Loom	\$549.75

Warp Beams for A-Series & Full Frame* Looms

Plain Beams (includes tension system, apron, apron rod and warp/lease sticks)

200-30	Plain Beam, 30" Looms	\$764.75
200-40	Plain Beam, 40" Looms	\$798.50
201	Plain Beam, 48" Looms	\$967.75
202	Plain Beam, 60" Looms	\$1,008.50
203	Plain Beam, 72" Looms	\$1,229.75

1/2 Yard Sectional Beams (Metal hoops at 2" spacing, includes tension system)

220-30	1/2-Yard Sectional Beam, 30" Looms	\$1,083.25
220-40	1/2-Yard Sectional Beam, 40" Looms	\$1,215.50
221-48	1/2-Yard Sectional Beam, 48" Looms	\$1,277.00
221-60	1/2-Yard Sectional Beam, 60" Looms	\$1,337.50
222	1/2-Yard Sectional Beam, 72" Looms	\$1,558.75

1 Yard Sectional Beams (Metal hoops at 2" spacing)		
240-30	1-Yard Sectional Beam, 30" Looms	\$1,215.50
240-40	1-Yard Sectional Beam, 40" Looms	\$1,337.50
241-48	1-Yard Sectional Beam, 48" Looms	\$1,389.25
241-60	1-Yard Sectional Beam, 60" Looms	\$1,451.75
242	1-Yard Sectional Beam, 72" Looms	\$2,158.50
261	Second 1 Yard "Bustle" for Full Frame Looms	\$1,043.50
361	Locking Brake (for A-Series and Folding Looms)	\$376.50

Warp Beams for Rug Looms

1101-4	Standard Warp Beam System, 4'	\$1,477.00
1101-6	Standard Warp Beam System, 6'	\$1,684.00
1102-8	Standard Warp Beam System, 8'	\$1,823.75
1102-10	Standard Warp Beam System, 10'	\$2,093.00
1103	Standard Warp Beam System, 12'	\$2,122.75
1104	Standard Warp Beam System, 15'	\$2,221.75
1121-4	Sectional Warp Beam System, 4'	\$1,684.00
1121-6	Sectional Warp Beam System, 6'	\$1,886.50
1122-8	Sectional Warp Beam System, 8'	\$2,297.75
1122-10	Sectional Warp Beam System, 10'	\$2,704.75
1123	Sectional Warp Beam System, 12'	\$2,978.50
1124	Sectional Warp Beam System, 15'	\$3,115.75
1201-4	High Capacity Sectional Beam Modification, 4'	\$419.00
1201-6	High Capacity Sectional Beam Modification, 6'	\$419.00
1202-8	High Capacity Sectional Beam Modification, 8'	\$566.25
1202-10	High Capacity Sectional Beam Modification, 10'	\$566.25
1203	High Capacity Sectional Beam Modification, 12'	\$566.25
1204	High Capacity Sectional Beam Modification, 15'	\$566.25

Warp Beams for WDL, SDL, V-Series, Home Loom, K-Series Looms

KL-PB2-24	Plain Warp Beam, 2nd/Lower Position for K-Series Loom, 24", includes motor driven tension system, apron and apron rod.	\$738.75
KL-PB2-32	Plain Warp Beam, 2nd/Lower Position for K-Series Loom, 32", includes motor driven tension system, apron and apron rod.	\$834.75
KL-PB2-40	Plain Warp Beam, 2nd/Lower Position for K-Series Loom, 40", includes motor driven tension system, apron and apron rod.	\$929.25
KL-HYD2-24	1/2-Yard Sectional Beam, 2nd/Lower Position for K-Series Loom, 24", includes motor driven tension system and hoops for 2" sections.	\$1,082.75
KL-HYD2-32	1/2-Yard Sectional Beam, 2nd/Lower Position for K-Series Loom, 32", includes motor driven tension system and hoops for 2" sections.	\$1,235.50
KL-HYD2-40	1/2-Yard Sectional Beam, 2nd/Lower Position for K-Series Loom, 40", includes motor driven tension system and hoops for 2" sections.	\$1,235.50
2110	Sectional Warp Beam, 1/2-Yard, 2" sections, for 20" SDL	\$586.50
2100	Sectional Warp Beam Upgrade (replaces Plain Beam with Sectional Beam, 1/2-Yard, 2" sections, for 20" SDL	\$513.50
2111	Plain Warp Beam, for 20" SDL	\$492.75
2120	Second Warp Beam System, for 20" SDL (with Plain Beam)	\$703.25

2121	Second Warp Beam System for SDL or V-Series (does not include a beam)	\$212.00
2101	Sectional Warp Beam Upgrade, for 30" V-Series (replaces Plain Beam with Sectional Beam, 1/2-Yard, 2" sections)	\$481.25
2113	Sectional Warp Beam, 1/2-Yard, 2" sections, for 30" V-Series	\$993.00
2112	Plain Warp Beam, for 30" V-Series	\$545.50
3090	Second Beam System (without beam) for WDL	\$462.25
3095	Plain Beam, for 16" WDL (includes apron, rods and handle)	\$439.25
3097	Plain Beam, for 24" WDL (includes apron, rods and handle)	\$480.00
3100	Sectional Beam, for 16" WDL (2" sections)	\$494.50
3150	Sectional Beam, for 24" WDL (2" sections)	\$533.50
970-40	Sectional Warp Beam Upgrade, 1/2-Yard, 40" (Home Loom)	\$561.25
970-48	Sectional Warp Beam Upgrade, 1/2-Yard, 48" (Home Loom)	\$588.75
972-40	Second Warp Beam System with Plain Beam, 40" (Home Loom)	\$1,289.00
972-48	Second Warp Beam System with Plain Beam, 48" (Home Loom)	\$1,385.00
973-40	Additional Plain Warp Beam, 40" (Home Loom)	\$711.25
973-48	Additional Plain Warp Beam, 48" (Home Loom)	\$809.00

Beater Add-ons for Rug Loom

1225	Air-Powered Beater for Rug Loom	\$3,136.50
1230	Air-Powered One-Box Flyshuttle System for Rug Loom	\$5,025.50
1235	Air-Powered Two-Box Flyshuttle System for Rug Loom	\$7,604.25
1240	Air-Powered Four-Box Flyshuttle System for Rug Loom	\$9,150.00
1245	Air-Powered One-Box Large Flyshuttle System for Rug Loom	\$7,122.50
1250	Air-Powered Two-Box Large Flyshuttle System for Rug Loom	\$10,781.75
1255	Air-Powered Four-Box Large Flyshuttle System for Rug Loom	\$12,963.25
1260	Air-Powered Four-Box Flyshuttle System w/ auto-shuttle selection and firing for Rug Loom	\$16,952.00

Beaters for A-Series & Full Frame* Looms

100-30	Standard Bottom Swing Beater, 30" Looms	\$659.00
100-40	Standard Bottom Swing Beater, 40" Looms	\$692.25
101-48	Standard Bottom Swing Beater, 48" Looms	\$761.25
101-60	Standard Bottom Swing Beater, 60" Looms	\$798.50
102	Standard Bottom Swing Beater, 72" Looms	\$944.00
105-30	Standard Overhead Beater, 30" Looms	\$963.00
105-40	Standard Overhead Beater, 40" Looms	\$1,012.00
105-48	Standard Overhead Beater, 48" Looms	\$1,097.50
105-60	Standard Overhead Beater, 60" Looms	\$1,164.25
105-72	Standard Overhead Beater, 72" Looms	\$1,545.50
120-30	Single Box Flyshuttle Bottom Swing Beater, 30" Looms	\$992.50
120-40	Single Box Flyshuttle Bottom Swing Beater, 40" Looms	\$1,039.00
121-48	Single Box Flyshuttle Bottom Swing Beater, 48" Looms	\$1,095.25
121-60	Single Box Flyshuttle Bottom Swing Beater, 60" Looms	\$1,148.75
122	Single Box Flyshuttle Bottom Swing Beater, 72" Looms	\$1,366.75
123-30	Single Box Flyshuttle Overhead Beater, 30" Looms	\$1,297.25

123-40	Single Box Flyshuttle Overhead Beater, 40" Looms	\$1,359.75
124-48	Single Box Flyshuttle Overhead Beater, 48" Looms	\$1,446.75
124-60	Single Box Flyshuttle Overhead Beater, 60" Looms	\$1,502.50
125	Single Box Flyshuttle Overhead Beater, 72" Looms	\$1,950.25
140-30	Double Box Flyshuttle Bottom Swing Beater, 30" Looms	\$1,767.50
140-40	Double Box Flyshuttle Bottom Swing Beater, 40" Looms	\$1,849.75
140-48	Double Box Flyshuttle Bottom Swing Beater, 48" Looms	\$1,959.00
141-30	Double Box Flyshuttle Overhead Beater, 30" Looms	\$1,961.25
141-40	Double Box Flyshuttle Overhead Beater, 40" Looms	\$2,056.75
142	Double Box Flyshuttle Overhead Beater, 48" Looms	\$2,266.50
143	Double Box Flyshuttle Overhead Beater, 60" Looms	\$2,390.75
143-72	Double Box Flyshuttle Overhead Beater, 72" Looms	\$2,665.00
144-48	Double Box Flyshuttle Overhead Air Assisted Beater, 48" Looms	\$8,018.25
144-60	Double Box Flyshuttle Overhead Air Assisted Beater, 60" Looms	\$8,223.00
144-72	Double Box Flyshuttle Overhead Air Assisted Beater, 72" Looms	\$8,800.25
160-30	Four Box Flyshuttle Overhead Beater, 30" Looms	\$3,283.75
160-40	Four Box Flyshuttle Overhead Beater, 40" Looms	\$3,286.00
161-48	Four Box Flyshuttle Overhead Beater, 48" Looms	\$3,402.25
161-60	Four Box Flyshuttle Overhead Beater, 60" Looms	\$3,404.50
161-72	Four Box Flyshuttle Overhead Beater, 72" Looms	\$3,693.25
162-48	Four Box Flyshuttle Overhead Air Assisted Beater, 48" Looms	\$11,914.50
162-60	Four Box Flyshuttle Overhead Air Assisted Beater, 60" Looms	\$11,916.75
162-72	Four Box Flyshuttle Overhead Air Assisted Beater, 72" Looms	\$11,919.00

Beater Conversion Systems

Converts existing beater system - for items 504-506, please specify bottom swing or overhead

500	Overhead Beater Conversion (all parts to convert Bottom Swing Beater to Overhead Beater, for all A-Series and Full Frame Looms)	\$921.00
504	Single Box Flyshuttle Conversion (all parts to convert Bottom Swing or Standard Overhead Beater to Single Box Flyshuttle Beater, for A-Series, Full Frame, Folding and Home Looms)	\$921.00
925	Single Box Flyshuttle Beater (Conversion for the Home Loom)	\$1,356.25
505	Double Box Flyshuttle Conversion (all parts to convert Bottom Swing or Standard Overhead Beater to Double Box Flyshuttle Beater, for A-Series, Full Frame and Folding Looms)	\$1,876.25
506	Four Box Flyshuttle Conversion (all parts to convert Standard Overhead Beater to Four Box Flyshuttle Beater, for A-Series and Full Frame Looms)	\$2,379.75

Bobbin and Spool Winding Equipment

607	Bobbin-Winding Guide	\$79.75
610	Electric Bobbin Winder (with bobbin/spool thread guide)	\$565.25
612	Electric Bobbin Winder (220 voltage, includes 200W stepdown transformer)	\$634.25
610-S	Electric Bobbin Winder (with bobbin/spool thread guide)	\$625.00

612-S	Electric Bobbin Winder (220 voltage, includes 200W stepdown transformer)	\$664.75
611	Automatic Bobbin Winder	\$5,252.50
613	Automatic Bobbin Winder, 220 Voltage	\$5,310.00
TEN-EBW	Auto-Tensioner for Electric Bobbin Winder	\$65.00

Compu-Dobby® Systems

700	Compu-Dobby® System, 16 Harness, Positive Dobby	\$4,901.25
701	Compu-Dobby® System, 24 Harness, Positive Dobby	\$5,989.75
705	Compu-Dobby® System, 20 Harness, Positive Dobby	\$6,463.00
730	Compu-Dobby® System, 8 Harness for A /V-Series, Negative Dobby	\$3,908.25
731-WL	Compu-Dobby® System, 8 Harness for WDL, Negative Dobby	\$3,391.75
732	Compu-Dobby® System, 16 Harness for A/V-Series/FDL, Neg. Dobby	\$4,681.50
733-WL	Compu-Dobby® System, 16 Harness for WDL, Negative Dobby	\$3,753.00
734	Compu-Dobby® System, 24 Harness for A/V-Series, Neg. Dobby	\$5,610.25
735-WL	Compu-Dobby® System, 24 Harness for WDL, Negative Dobby	\$4,483.25
737	Compu-Dobby® System, 32 Harness for A/V-Series, Neg. Dobby	\$5,892.00
736	Compu-Dobby® 5 System, 40 Harness for A/V-Series, Neg. Dobby	\$6,725.75
CD4.5P-24H-IL	Compu-Dobby® & 4-Box Control System Upgrade, 24 Harness for IDL	\$9,819.25
711	USB-Serial High Speed Adapter (for PC or Mac)	\$75.75
ELT-1212150	RS-232 Serial Cable	\$32.75
715	220 Voltage to 110 Voltage Electrical Converter (300W Continuous Operation)	\$84.00
716	Universal AC Inlet to UK Outlet Adaptor (Converts US/EU plug to UK)	\$25.25
717	220-110V 500W Converter (500 watt voltage step up or down)	\$79.75
1701-ACD	Air-Powered Compu-Dobby® System (8 Harness) for Rug Loom	\$5,989.75
1702-ACD	Air-Powered Compu-Dobby® System (12 Harness) for Rug Loom	\$6,809.00
1703-ACD	Air-Powered Compu-Dobby® System (16 Harness) for Rug Loom	\$7,631.25
1704	Mechanical to Compu-Dobby® Upgrade Kit for Air Powered Rug Loom	\$823.25
510	Compu-Dobby® to Mechanical Dobby Conversion, 16 Harness for A-Series, Folding and Full Frame Looms	\$1,833.50
511	Compu-Dobby® to Mechanical Dobby Conversion, 24 Harness for A-Series, Folding and Full Frame Looms	\$2,209.00

Counters

402	Yardage Counter (to mount on Tension Box)	\$282.75
YC-SYS	Digital Metering Counter for Measuring Yarn Length while Winding	\$138.00
RC-MAS1	Revolution Counter	\$158.00

Harness and Treadle Additions

Modular Loom Harness and Treadle System includes 1 harness, 1 treadle, cable tie-up and 100 heddles

340	Modular Loom Harness and Treadle System, Polyester Heddles (for A-Series, Full Frame and FDL)	\$213.75
341	Modular Loom Harness and Treadle System, Steel/Wire Heddles (for A-Series, Full Frame and FDL)	\$314.00
920	Harness and Treadle Systems (polyester heddles) For Home Loom	\$213.75
921	Harness and Treadle Systems (metal heddles) For Home Looms	\$314.00

320	Metal Heddle System, Modular Loom (per harness)	\$111.50
324	Metal Heddle System, 4 Harness Looms	\$428.25
325	Metal Heddle System, 8 Harness Looms	\$847.00
321	Metal Heddle System, 16 Harness Looms	\$1,689.75
322	Metal Heddle System, 24 Harness Looms	\$2,512.00
323	Metal Heddle System, 40 Harness Looms	\$4,152.50

Heddles and Tie-up Cords

650	Polyester Heddles, Positive Dobby (100 pack)	\$38.00
651	Long Polyester Heddles, Negative Dobby (100 pack)	\$39.00
653-1	Inserted-Eye, Twisted Wire Heddles, Positive Dobby (100 pack)	\$55.75
653-2	Inserted-Eye, Twisted Wire Heddles, Negative Dobby (100 pack)	\$55.75
653-3	Small-Eye, Metal Heddles, Positive Dobby (100 pack)	\$55.75
654	Polyester Heddles, Workshop Dobby Loom (100 pack)	\$44.75
1501	Inserted-Eye, Twisted Wire Heddles, Rug Loom (100 pack)	\$81.00
HDL-LW	Little Weaver Polyester 8" Heddles with small eye	\$44.75
661-BML	Patch Cord, Pre-1988 Basic Modular Loom (set of 10)	\$26.50
661-ABML	Patch Cord, A-Series & post 1/1/88 Basic Modular Loom (set of 10)	\$26.50
661-FML	Patch Cord, Folding Modular Loom (set of 10)	\$24.00
661-HL	Patch Cord, Home Loom (set of 10)	\$23.00

Lift Assist Systems

520	A-Lift Pneumatically Assisted Dobby (for A-Series, Full Frame and FDL)	\$1,840.50
EL3-SYS	E-Lift II, Electrically Assisted Dobby (110v, for A-Series, PDL & TDL)	\$5,251.50
EL3-SYS	E-Lift II, Electrically Assisted Dobby (110v, for SDL)	\$5,251.50
EL3-SYS	E-Lift II, Electrically Assisted Dobby (110v, for Folding Dobby Loom with positive Dobby)	\$5,251.50
EL3-SYS	E-Lift II, Electrically Assisted Dobby (110v, for Folding Dobby Loom with negative Dobby)	\$5,251.50
EL3-SYS	E-Lift II, Electrically Assisted Dobby (220 Voltage, for A-Series, PDL & TDL)	\$5,251.50
EL3-SYS	E-Lift II, Electrically Assisted Dobby (220 Voltage, for SDL)	\$5,251.50
EL3-SYS	E-Lift II, Electrically Assisted Dobby (220v, for Folding Dobby Loom with positive Dobby)	\$5,251.50
EL3-SYS	E-Lift II, Electrically Assisted Dobby (220v, for Folding Dobby Loom with negative Dobby)	\$5,251.50
528	E-Lift Spring Lever Conversion (for A-Series, PDL, TDL, FDL & SDL)	\$134.00
529	E-Lift II Conversion for Treadle Jacq3G (this conversion does not apply to other AVL Jacquards. Max of 18 modules/2160 hooks)	\$7,808.50
509	E-Lift II Conversion, Jacq3G, 40", 220 voltage	\$7,350.50

Raddles

LW-RAD-MAS1	Little Weave 16 inch 2-Piece Raddle (includes mounting pins)	\$146.50
WL-RAD-3300	Raddle, 16" for Workshop Dobby Loom	\$146.50
2140	Raddle, 20"	\$175.25

WL-RAD-3350	Raddle, 24" for Workshop Dobby Loom	\$192.50
KL-RAD-24	24 inch 2-Piece Raddle for K-Series (includes mounting pins)	\$192.50
409-30	Raddle, 30"	\$213.25
KL-RAD-32	32 inch 2-Piece Raddle for K-Series (includes mounting pins)	\$209.25
409-40	Raddle, 40"	\$222.50
KL-RAD-40	40 inch 2-Piece Raddle for K-Series (includes mounting pins)	\$215.50
410-48	Raddle, 48"	\$254.00
410-60	Raddle, 60"	\$265.00
411	Raddle, 72"	\$286.75
1401	Raddle, 4'	\$298.25
1402	Raddle, 6'	\$329.50
1403	Raddle, 8'	\$358.75
1404	Raddle, 10'	\$427.25
1405	Raddle, 12'	\$506.00
1406	Raddle, 15'	\$529.00

Reeds

REED-16.5	16" weaving width (for Little Weaver v2)	\$66.00
REED-16.5	16" weaving width reed (Workshop Dobby Loom)	\$66.00
REED-21	20" weaving width reed (Studio Dobby Loom)	\$21.00
REED-24.5	24" weaving width reed (Workshop Dobby Loom)	\$98.00
REED-24.5	24" weaving width (for IDL)	\$98.00
REED-31	30" weaving width	\$124.00
REED-41	40" weaving width	\$164.00
REED-41	40" weaving width (for IDL)	\$164.00
REED-49	48" weaving width	\$196.00
REED-57	4' weaving width (for Rug Loom)	\$228.00
REED-61	60" weaving width	\$244.00
REED-69	60" weaving width (for IDL)	\$276.00
REED-73	72" weaving width	\$292.00
REED-73	6' weaving width (for Rug Loom)	\$292.00
REED-73	72" weaving width (for IDL)	\$292.00
REED-105	8' weaving width (for Rug Loom)	\$525.00
REED-129	10' weaving width (for Rug Loom/call for additional S&H charges)	\$645.00
REED-153	12' weaving width (for Rug Loom/call for additional S&H charges)	\$765.00
REED-182	15' Stainless Steel Reed (call for additional S&H charges)	\$910.00

Shuttles and Bobbins

SHT-QLL-03	3 ½" (9cm) Paper Quills - Package of 10	\$13.25
SHT-SBT-10	Boat Shuttle, 10", Closed Bottom, Swedish-Style (uses 9cm quill - not included)	\$56.25
600	Standard Flyshuttle (includes 3 bobbins)	\$327.75
SHT-E413F	Standard Handshuttle, 15.25" with Honex 31B tensioner (includes 3 bobbins)	\$288.50
602	Small Handshuttle, 12.5" (includes 3 bobbins)	\$232.75

SHT-E413E	Small Handshuttle, 11" (includes 3 bobbins)	\$180.50
603	Thick Yarn Handshuttle, Standard	\$301.25
1510	AVL Standard Rug Shuttle, 18"	\$46.50
1510-4	AVL Rug Shuttle, 4'	\$65.00
605	Standard Hand/Flyshuttle Bobbin (6 per set, for 15 1/4" shuttles)	\$39.00
606	Small Handshuttle Bobbins (6 per set, for 11-12.5" small shuttles)	\$39.00

Software

845	WeavePoint (Windows Only), Please specify AVL or Louet	\$376.00
843	WeavePoint without Loom Driver (Windows Only)	\$297.00
846	Complex Drafting Module for WeavePoint (Requires WeavePoint purchase)	\$176.00
847	WeavePoint Upgrade, price per major version (Windows Only)	\$117.00
848	Complex Drafting Module for WeavePoint Upgrade, price per major version	\$69.00
844	WeavePoint LIPS Driver (requires WeavePoint purchase)	\$94.00
840	WeavePoint for IDL (Windows Only)	\$1,650.00
840-U	WeavePoint Upgrade for IDL, price per major version (Windows Only)	\$550.00
841	JacqPoint	\$1,650.00
885	ArahWeave PE (Personal Edition) Limited to 2048 ends by 2048 picks	\$2,145.00
886	ArahWeave Super PE (Personal Edition) Up to 4096 ends by 4096 picks	\$3,365.00
887	ArahWeaveJumbo PE (Personal Edition) Limited to 8192 ends by 8192 picks	\$4,490.00
888	ArahWeaveOne Format (Personal Edition) weave size limited to 65,000 picks and a single output format	\$7,860.00
884	ArahWeave Yearly License Renewal	\$395.00

Tension Box and Mounting

TB-RCS-SYS	Tension Box (for sectional warping)	\$545.00
TB-SYS	Tension Box, Heavy Duty with Steel Pegs (for sectional warping)	\$586.50
401	Track and Mounting System (for tension box &/or selvage rollers)	\$298.25
401-FL-30	Track & Mount System, 30 in Folding Loom; for Tension Box and Selvage Rollers	\$373.75
401-FL-40	Track & Mount System, 40 in Folding Loom; for Tension Box and Selvage Rollers	\$376.00
401-FL-48	Track & Mount System, 48 in Folding Loom; for Tension Box and Selvage Rollers	\$378.25
3250-16	Track & Mount System, 16 in Workshop Dobby Loom; for Tension Box and Selvage Rollers	\$298.25
3250-24	Track & Mount System, 24 in Workshop Dobby Loom; for Tension Box and Selvage Rollers	\$298.25
1302-4	Track and Mounting System (for tension box), 4' Rug Loom	\$441.00
1302-6	Track and Mounting System (for tension box), 6' Rug Loom	\$458.25
1303-8	Track and Mounting System (for tension box), 8' Rug Loom	\$469.25
1303-10	Track and Mounting System (for tension box), 10' Rug Loom	\$486.50
1304	Track and Mounting System (for tension box), 12' Rug Loom	\$499.00

1305	Track and Mounting System (for tension box), 15' Rug Loom	\$525.50
KL-T&M-SYS-24	Track and Mounting System for K-Series, 24 inch (for Tension Box and Selvage Rollers)	\$298.25
KL-T&M-SYS -32	Track and Mounting System for K-Series, 32 inch (use with Tension Box and Selvage Rollers)	\$300.75
KL-T&M-SYS -40	Track and Mounting System for K-Series, 40 inch (use with Tension Box and Selvage Rollers)	\$303.00

Warping Equipment

SLEY-5N	5" Narrow Hook Sley/Threading Hook	\$12.50
SLEY-6	6" Sley/Threading Hook	\$12.50
SLEY-7.5	7.5" Sley/Threading Hook	\$12.50
SLEY-10	10" Sley/Threading Hook	\$12.50
SLEY-14PD	Patent Denter (Automatic Reed Hook), Double-Sided Hooks, for 10-14 Dent Spacings	\$98.25
SLEY-20PD	Patent Denter (Automatic Reed Hook), Double-Sided Hooks, for 15-20 Dent Spacings	\$98.25
CR-SYS	Cone Rack (56 spindles)	\$523.25
CC-SYS	Cone Caddy	\$79.75
SR-SYS	Spool Rack (104 spool capacity)	\$690.00
SR-SPOOL-001	Spools, 4" (each)	\$9.75
WW3-SYS	Warping Wheel	\$941.25
WWC-SYS	Warping Wheel Crossmaker	\$97.75
WW2-SYS-SPKUG	Warping Wheel Spoke Upgrade	\$453.50
WB-SYS	Warping Board	\$215.50
BWS-SYS	Free Standing Beam Winder (please specify a max width of 48" or 72")	\$1,102.75
PBW-FS-110	Powered Beam Winder (110 volt)	\$10,090.50
PBW-FS-220	Powered Beam Winder (220 volt)	\$10,090.50